

Note: On this early lesson page, Ted used the playing order of dot, X, O. In the redrawing of the grid diagrams this has been changed to dot, X, square in order to be consistent with all his other lessons.

Lydian Tonality

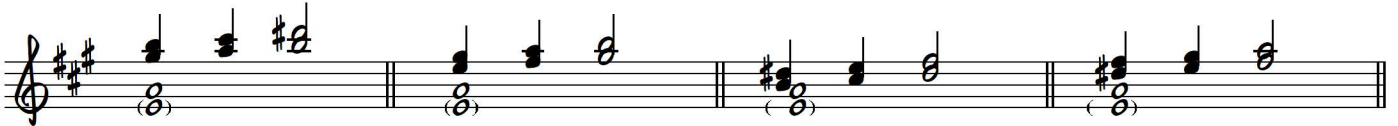
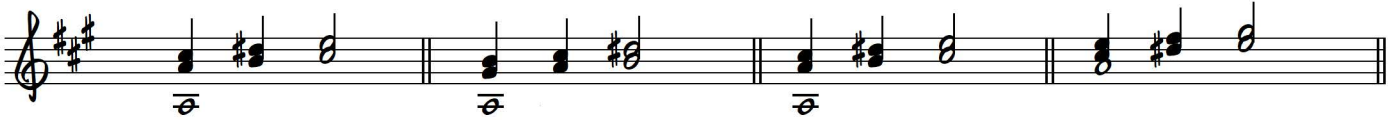
Ted Greene
1975-10-02

[All chords are of the
Amaj7#11 or A6/9#11 types.]

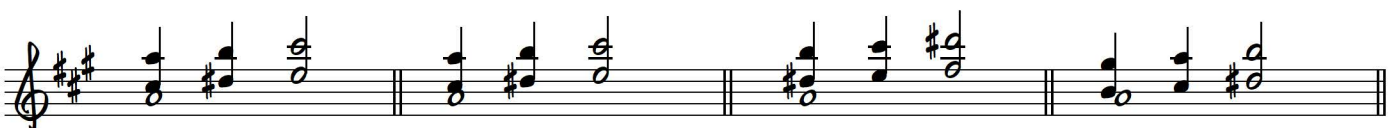
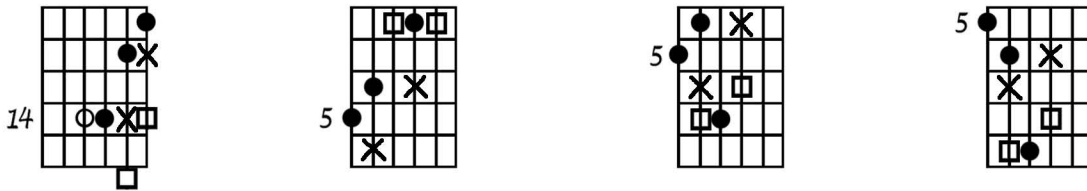
Playing order: ● X □ △ ★
○ = opt.

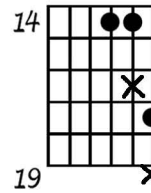
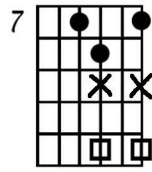
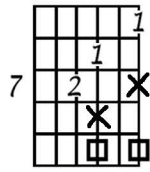
Root Pedal and 3rds (do similar with 5th interval anchor):

Key of A
Carry each
one out

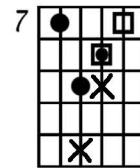
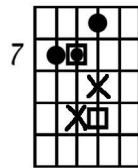
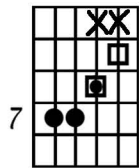
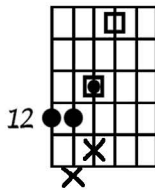
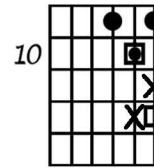
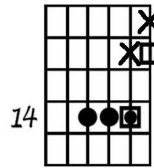
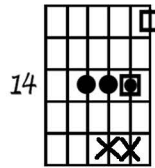
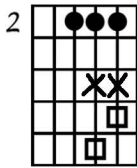


Root Pedal and 6ths:

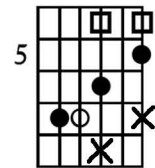
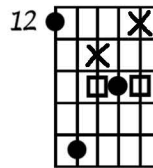
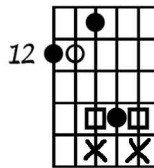
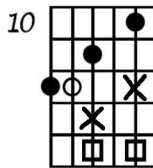
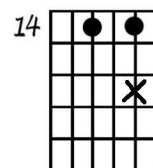
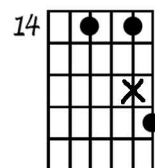
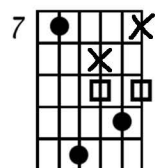
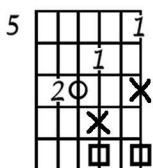




5th Pedal and 3rds:

5th Pedal and 6ths:

All small triad I - II vamps over Root pedal, 5th pedal, or alternate R and 5th (and 4th or 5th anchor if possible).

All 3rd's as above with Root pedal, 5th pedal, or alternate R and 5th, and 4th or 5th anchors.
 - and 4ths, 5ths, and key of Eb (high).

All 4ths, 5ths, over Root, 5th, or alternate pedals on anchors.

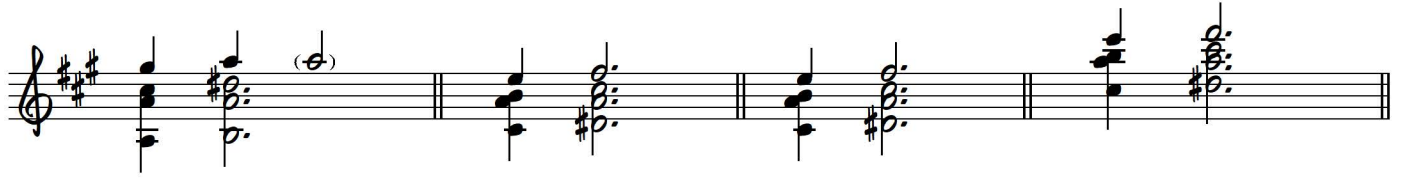
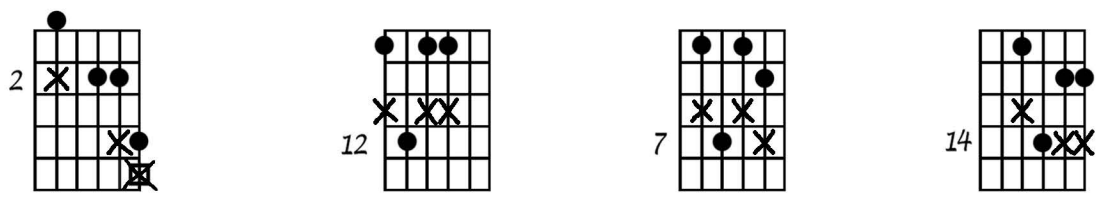
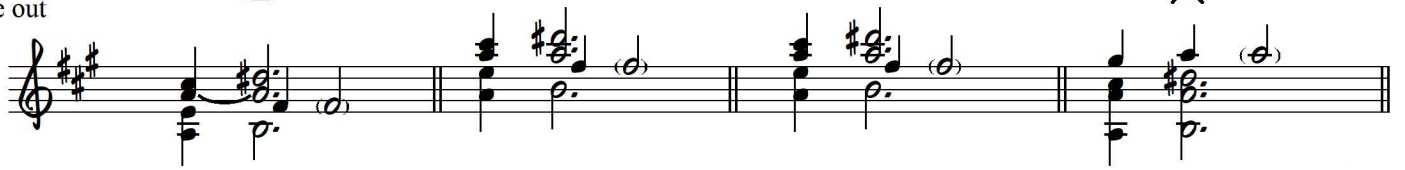
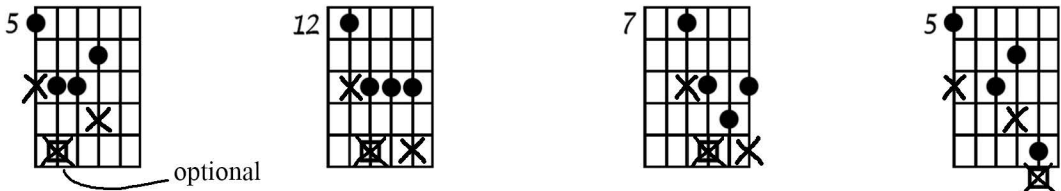
All contrary runs in 1-to-1, 2-to-1 (in either voice) from all odd and even intervals, all over Root pedal.

6/4 triad anchor; 3rd anchor. Scales with suspensions. Soprano pedal.

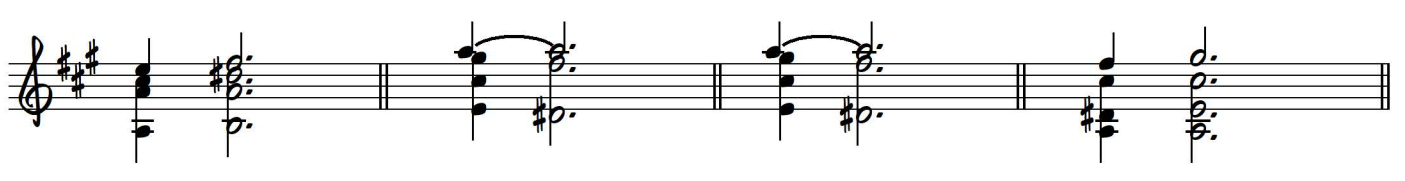
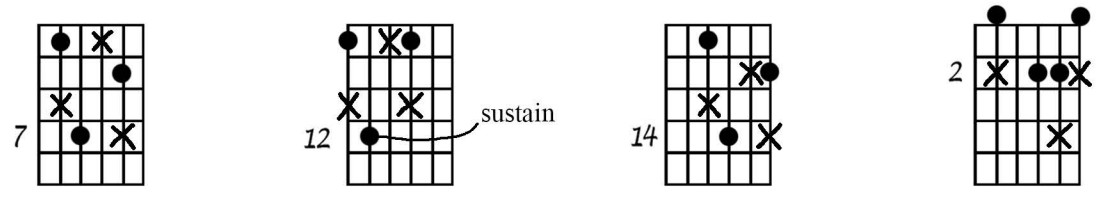
Root in middle of 6ths, 10ths;

[chords created:
A - B7]

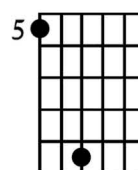
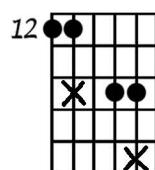
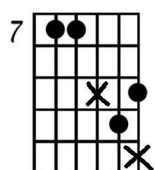
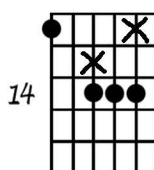
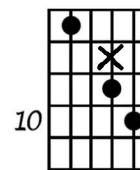
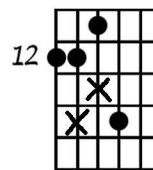
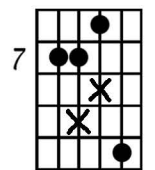
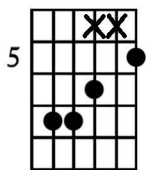
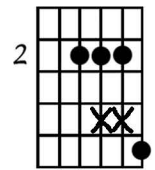
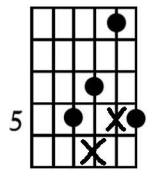
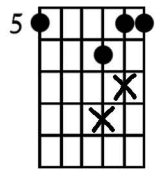
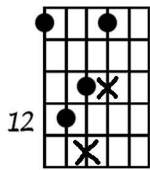
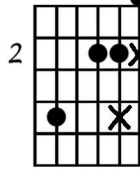
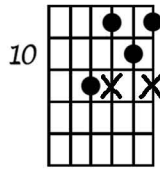
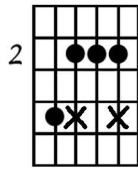
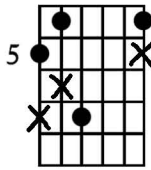
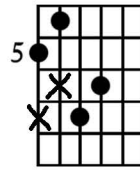
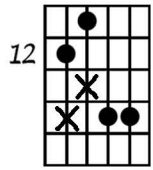
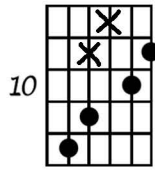
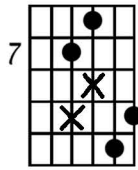
Carry each
one out



Also:

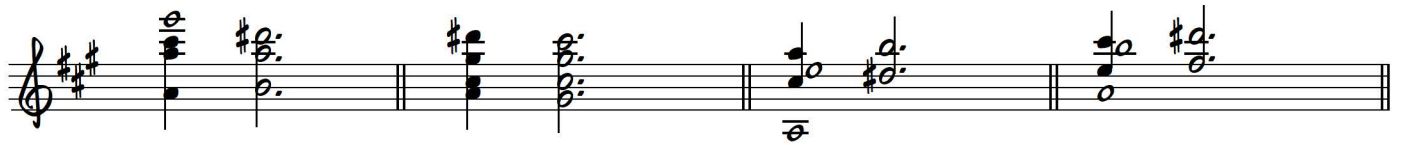
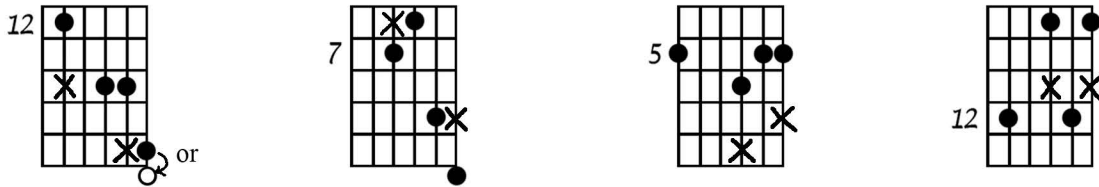
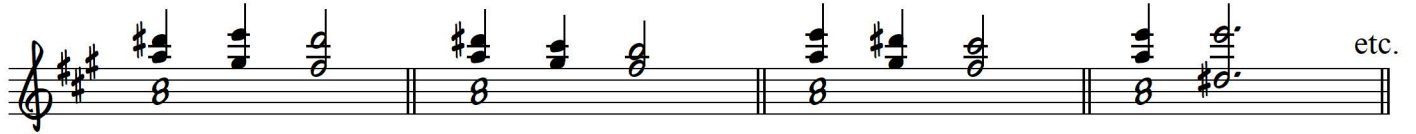


"Lydian Tonality" - Ted Greene, p.4

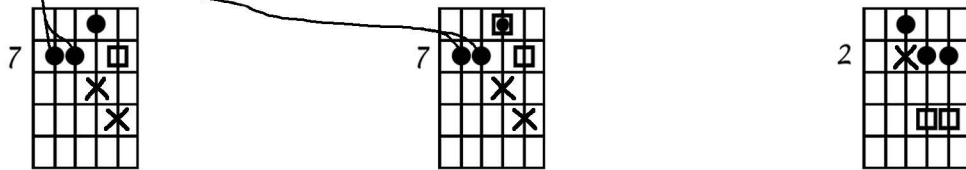


3rds over:

3rd anchor with 4ths, 5ths, 6ths, (7ths):



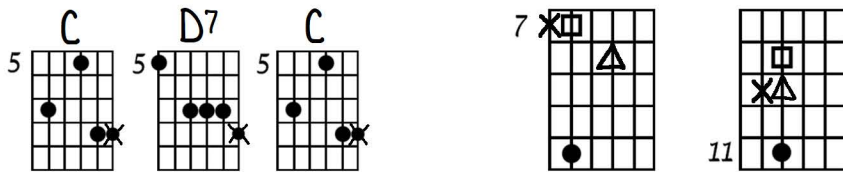
Or just 2 notes on downbeat. (Do in F, Ab, C, Eb or E, G, B)



A Lydian



Using an "alternating" bass of 3 & 6 instead of R & 5:

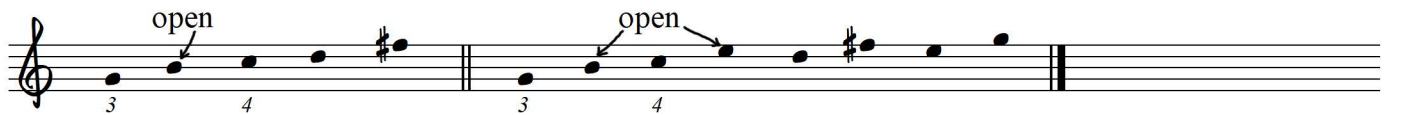
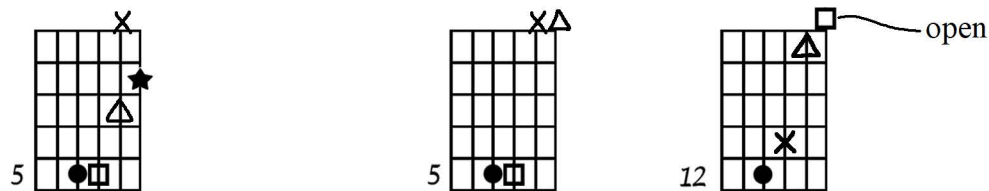
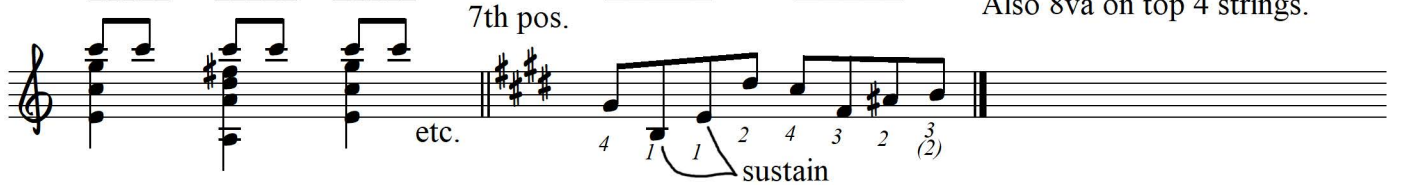


Also finger in 6th position off Emaj7/5 chord.

Analysis: Imaj7 - II / 5th of key.

All brought in gradually as a melody.

Also 8va on top 4 strings.



All devices with major7#11 scale. Also, devices with major 7 scales (diatonic chords, pedals, etc.) Also, devices with major7b5 scale (4 note: C, E, F#, B). On piano: use triad anchors.

