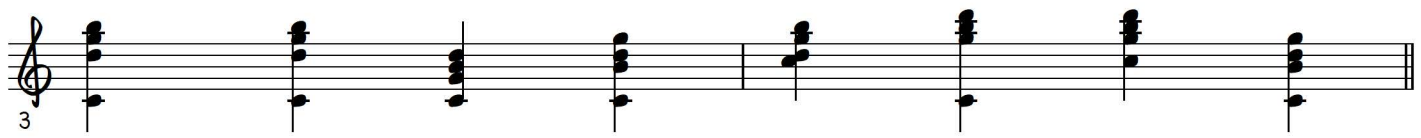
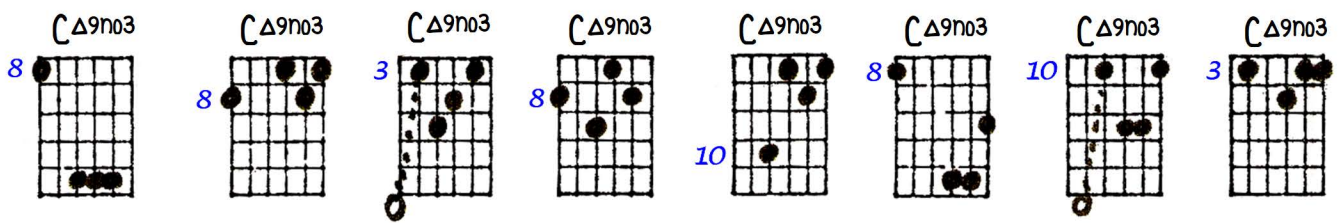
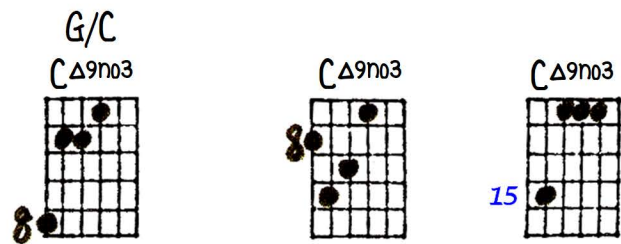


List of Bass-Enhanced Triads by Chord Quality

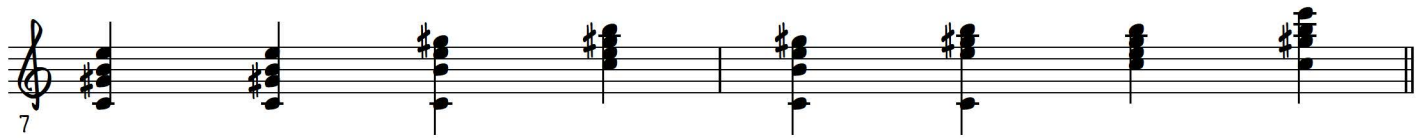
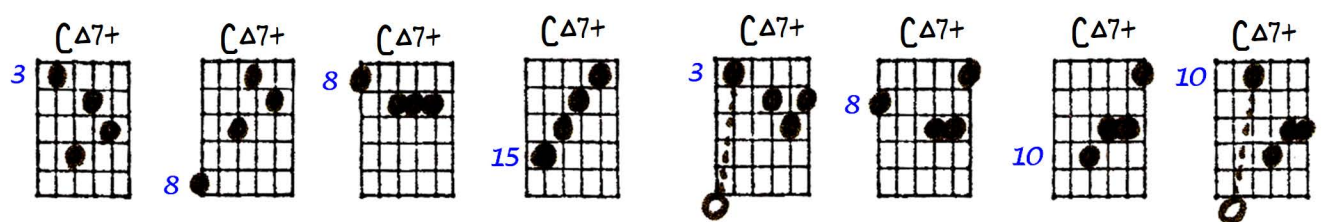
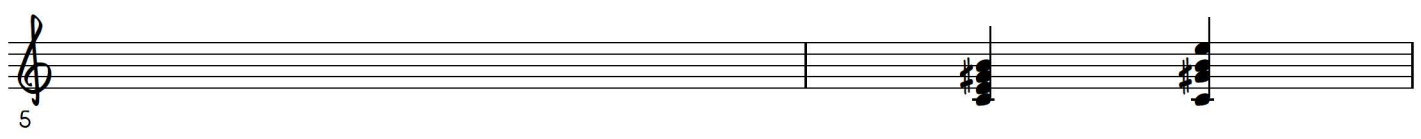
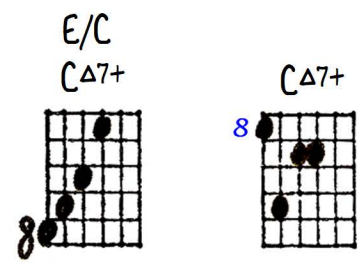
Ted Greene
1993-01-17

First Area: Major Family in some capacity

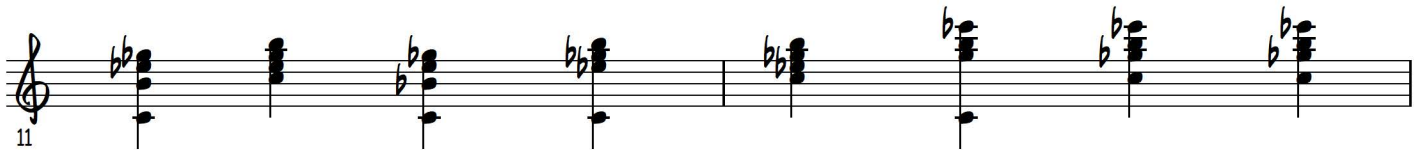
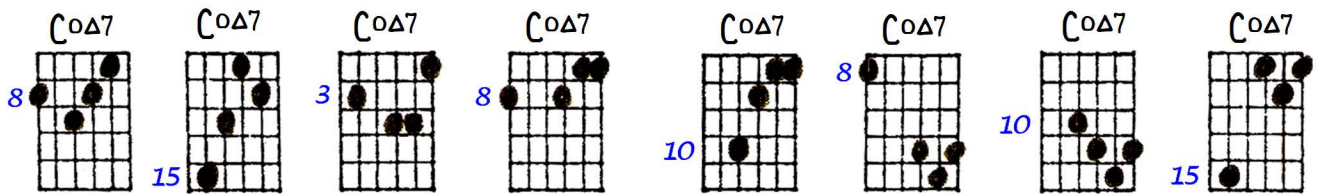
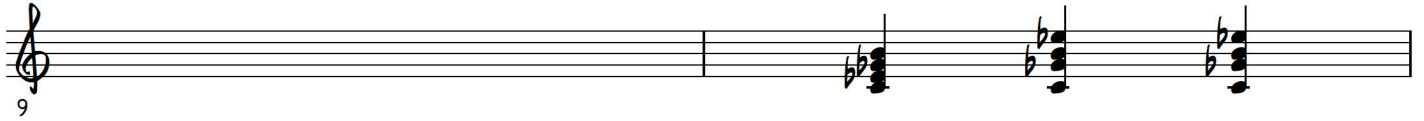
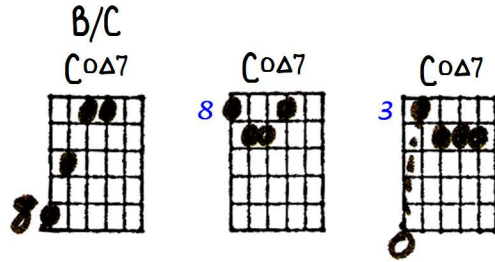
1) C major 9th no3
V/KR [V triad with the key's root in the bass]



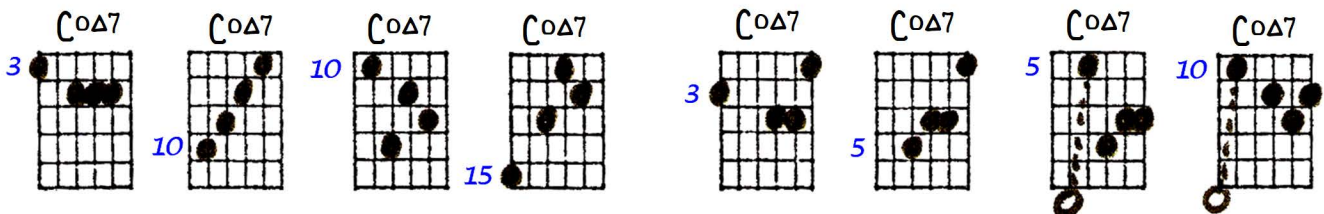
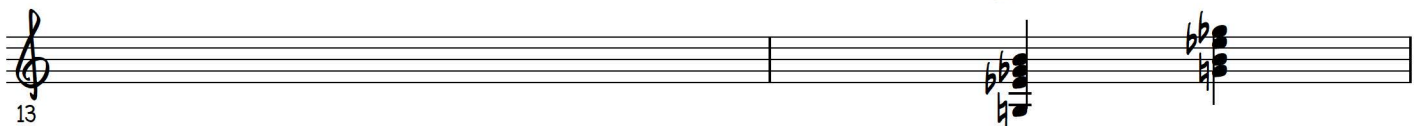
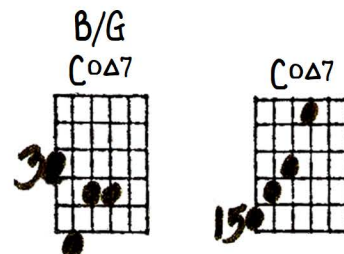
2) C major 7th #5
III/KR [III triad with the key's root in the bass]



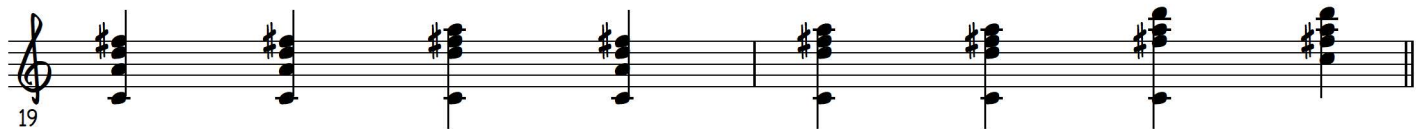
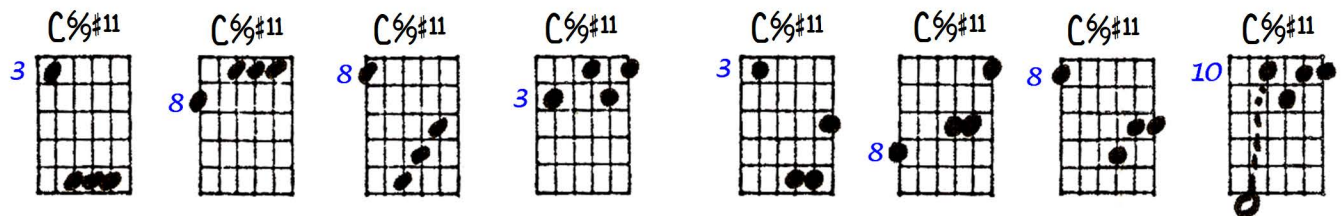
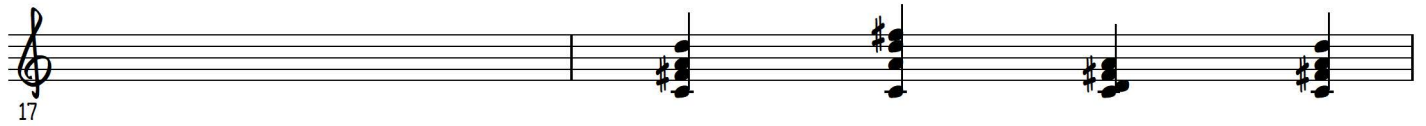
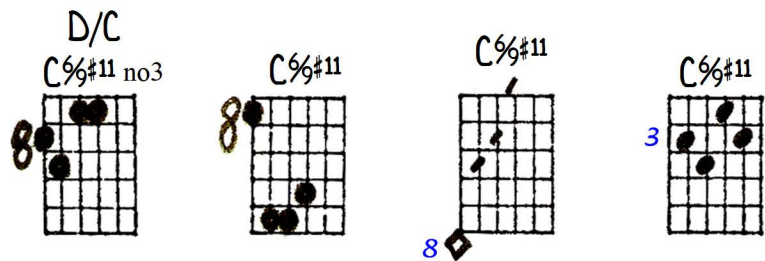
3) C diminished major 7
VII/KR [VII triad with the key's root in the bass]



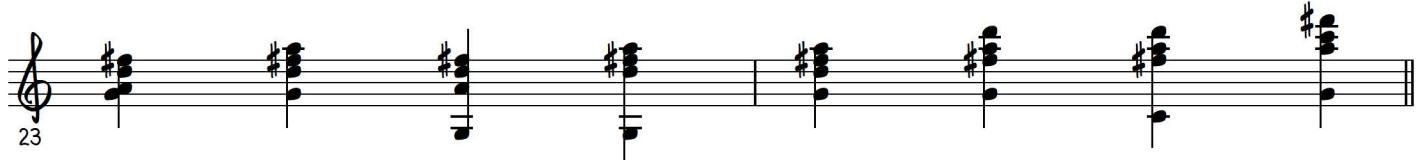
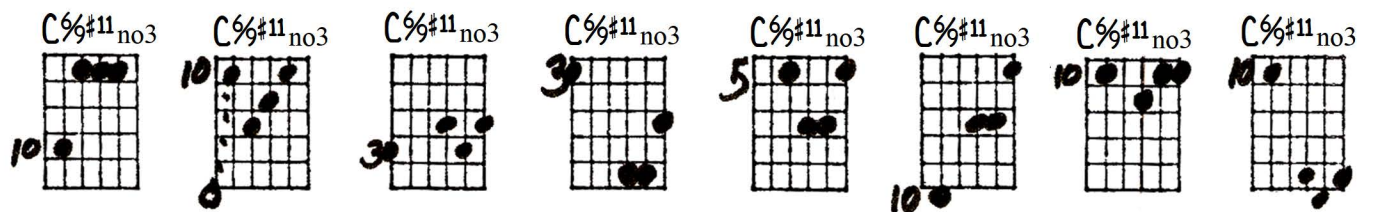
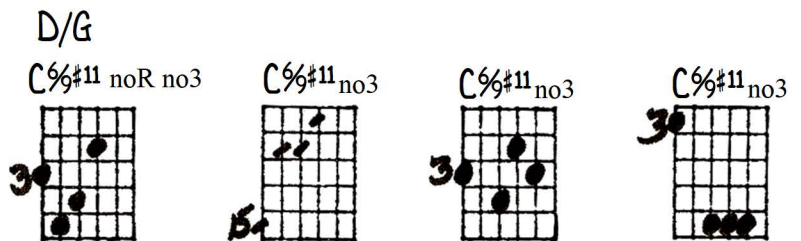
4) C diminished major7
VII/K5 [VII triad with the key's 5th in the bass]



5) C Lydian (C6/9#11no3)
II/KR [II triad with the key's root in the bass]



6) C Lydian (C6/9#11noR,3)
II/K5 [II triad with the key's 5th in the bass]



7) C major 9 noR (or iii7 substitute)
 V/K3 [V triad with the key's 3rd in the bass]

G/E
 Em7
 C Δ^9 noR

LIST of Bass-Enhanced triads
By Chord Quality

1ST AREA:
MAJOR FAMILY in some capacity

1-17-93

① $\Delta^9 \text{ no } 3 (\Delta^9 \text{ no } 3)$

② Δ^7+

③ $\text{C} \Delta^7+$

④ $\text{C} \Delta^7 / \text{KR}$

⑤ $\text{C} \Delta^7 / \text{K5}$

⑥ $\text{II} / \text{KR} = \text{CLYDIAN} (\text{C6} / \text{F} \text{ or } \text{G})$

⑦ $\text{II} / \text{K5} = \text{CLYD.} = \text{C6} / \text{F} \text{ or } \text{G} \text{ or } \text{B}$

⑧ $\Delta^9 \text{ no } R \text{ or } \text{ii} / \text{7 sub.}$

⑨ $\Delta^9 \text{ no } R \text{ or } \text{ii} / \text{7 sub.}$

⑩ $\Delta^9 \text{ no } R \text{ or } \text{ii} / \text{7 sub.}$

⑪ $\Delta^9 \text{ no } R \text{ or } \text{ii} / \text{7 sub.}$

⑫ $\Delta^9 \text{ no } R \text{ or } \text{ii} / \text{7 sub.}$