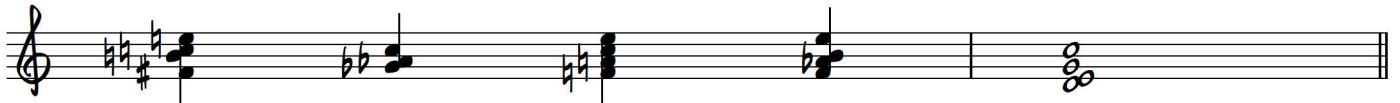
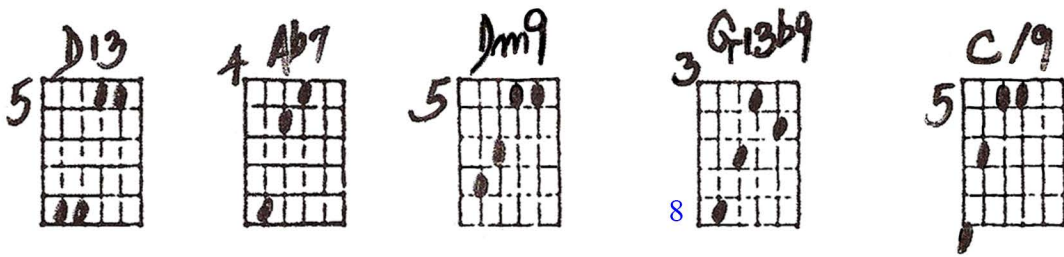
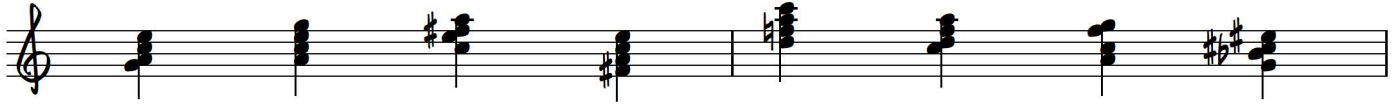
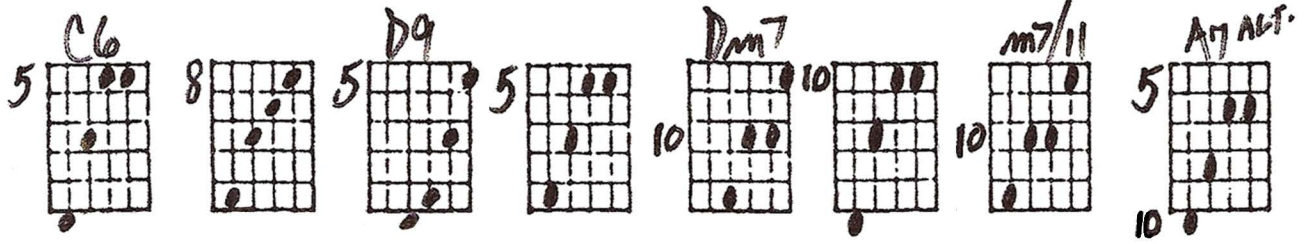


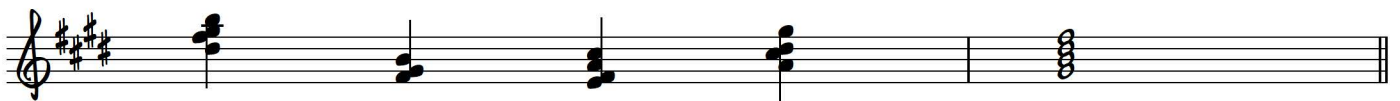
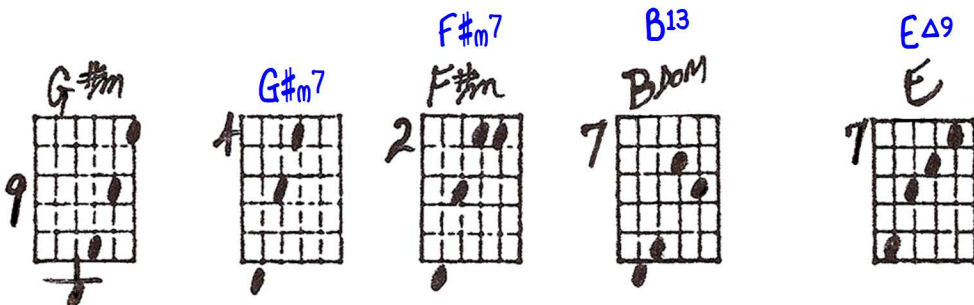
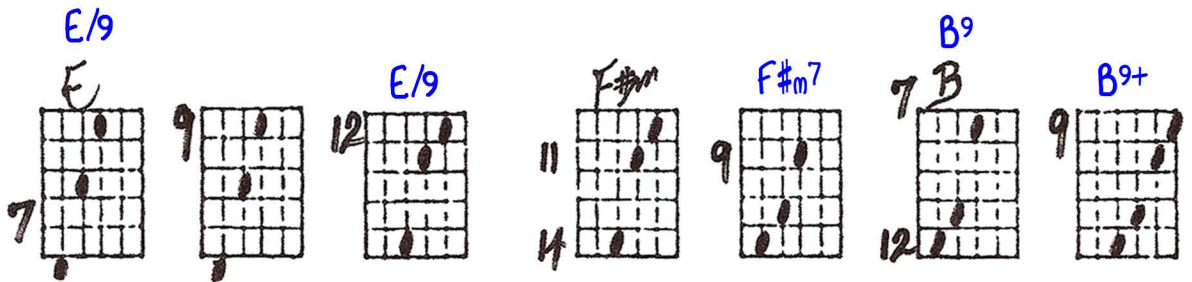
# Johnny Smith Style

Ted Greene  
2005-05-19

Key of C  
1)



Key of E  
2)



"Johnny Smith Style" - Ted Greene, p.2

Key of Ab

3)

Ab 16 || Ab/9 || Fm 9 || Fm/9 9 || Bbm7 6 || Bbm7/11 13 || Eb13 || E7b9+ || AbΔ9 6

Key of D

4)

DΔ7 10 || A11 12 || DΔ9no3 12 || DΔ7 10 || D/9 10 || Bm/9 7 || Gm9 15

