

HOW HIGH THE MOON

© 2-29-87
Ted Greene

Harmonization of the 1st Phrase (Part 2)

Playing order: ● X □ △
○ = opt.

This page uses darker colors (but not that dark...no *Halloween II* here...).

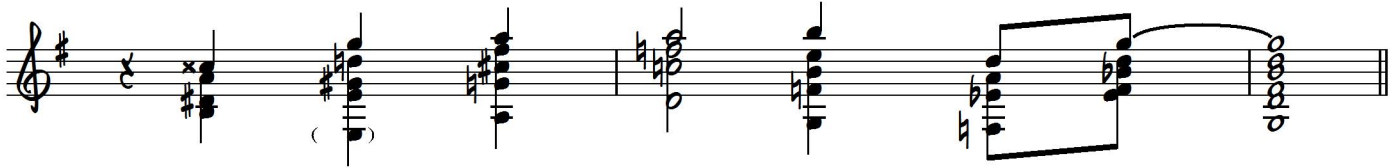
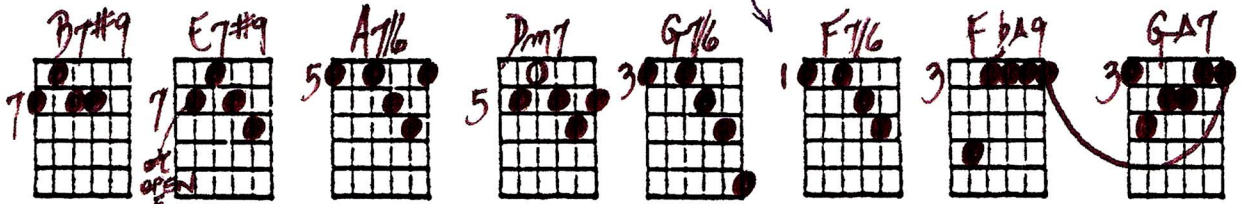
1) Key of Db

2) Key of C

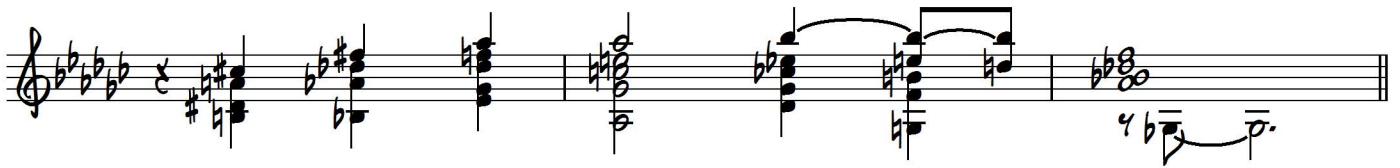
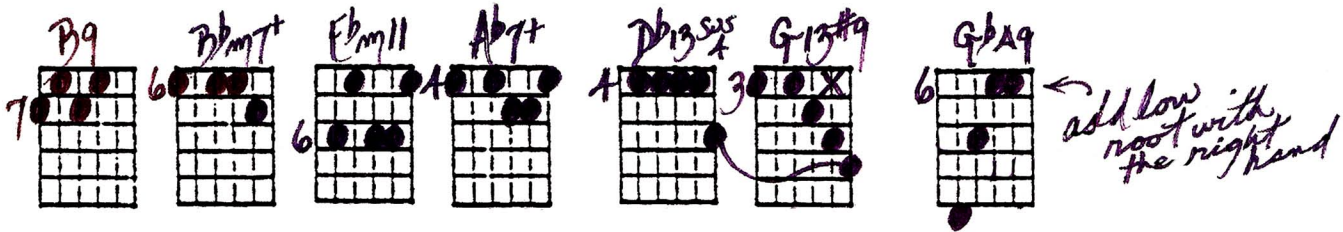
3) Key of F

4) Key of G

or use Cm9
(C in the bass)

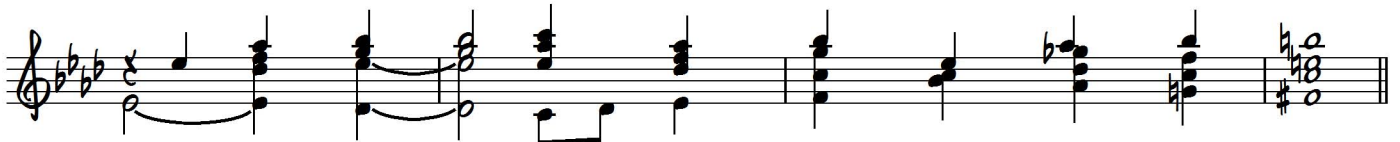
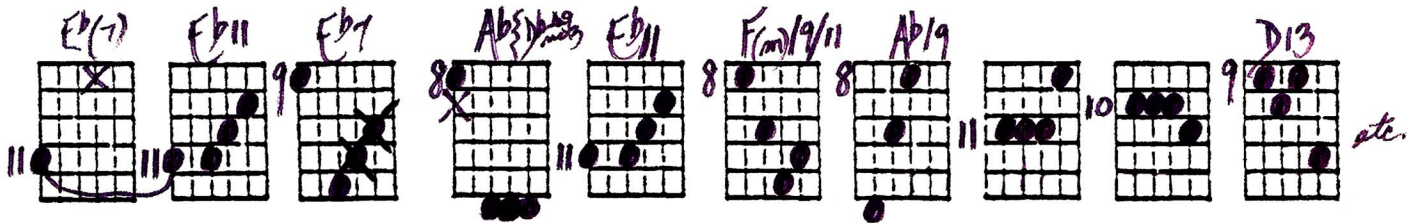


5) Key of Gb



6) Key of Ab

2ND PHRASE



7) Key of E

Handwritten guitar chord diagrams and musical notation for the 7th harmonic in the key of E. The diagrams show chords: E5, F#7, G#7, A6, F#9, B13#9, E6, E19, A13#11, and Bb13. The musical notation is in treble clef with a key signature of three sharps (F#, C#, G#).

8) Key of E

Handwritten guitar chord diagrams and musical notation for the 8th harmonic in the key of E. The diagrams show chords: E19, A#m7b5, Am7/6, G#m7, Gm7b9, F#m9, F13#9, and EA9. The musical notation is in treble clef with a key signature of three sharps (F#, C#, G#).

9) Key of E

Handwritten guitar chord diagrams and musical notation for the 9th harmonic in the key of E. The diagrams show chords: G#m7, Bb7b5, A7/6, G#7, G13b9, F#13, F13no, and E6/9. The musical notation is in treble clef with a key signature of three sharps (F#, C#, G#). A handwritten note says "electry C# in the base and B here".

HARMONIZATION of 1ST PHRASE of 'HOW HIGH THE MOON'

this page was darker colors (but not that dark no Halloween II here...)

© 2029-31
Jed Shreane

① Key of D

② Key of C

③ Key of F

④ Key of G

⑤ Key of Gb

⑥ Key of Ab

⑦ Key of E

⑧

⑨

Chord diagrams shown include: F7#9, Bb7#9, Eb7#9, Ab7#9, Db6/9, Cb6/9, D6/9#11, Db6/9, A7+, D7#9, G7#9, C6/9, Bb6/9, C6/9, Cm7/11, C7#9+, F7#9, D7+, G7, C7sus4, FA9, BbA9#3, EbA9#3, Gb6/9#11, F6/9, B7#9, E7#9, A7/6, Dm7, G7/6, F7/6, FbA9, GA7, B9, Bbm7+, Ebm11, Ab7+, Db7sus4, G7#9, GbA9, Eb(-), Eb11, Eb7, Ab7#9, Eb11, Fm7/9/11, Ab19, D13, E5, F#7, G#7, A6, F#9, B7#9, E6, E19, A13#11, Bb13, E/9, A#m7b5, Am7/6, G#m7, Gm7b9, F#m9, F13#9, FA9, G#m7, Bb7b5, A7/6, G#7, G13b9, F#13, F13#9, E6/9.

Handwritten notes: "2ND PHRASE" (twice), "add low 1st root through the next", "electry C# in the base and B here".