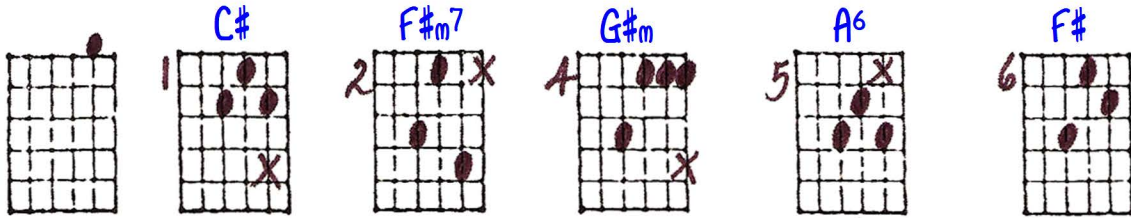


# Harmonization: First Phrase of "There Will Never Be Another You"

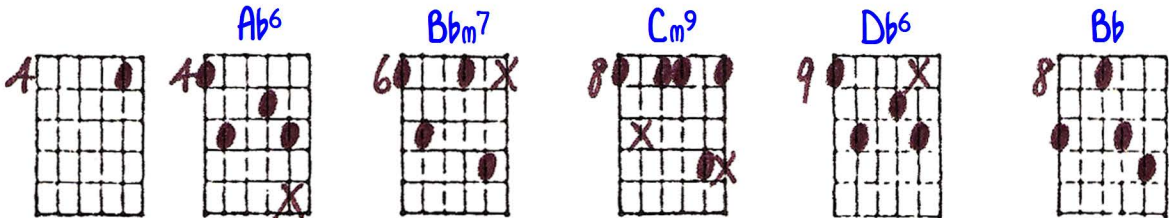
Ted Greene  
1984-10-28

Part 2: Ascending Diatonic Stepwise Bass Derived (2-to-1 Harmonic Rhythm)

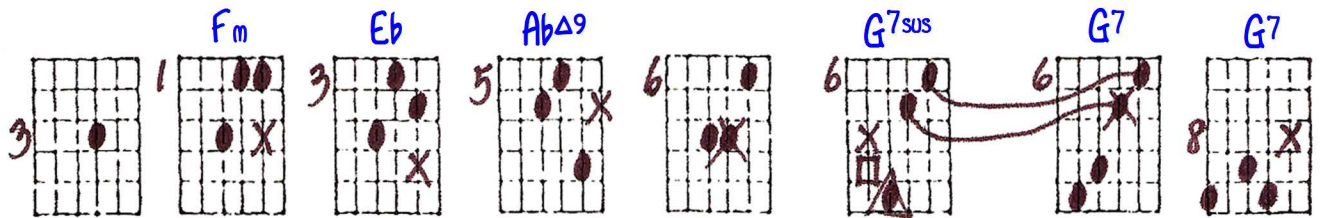
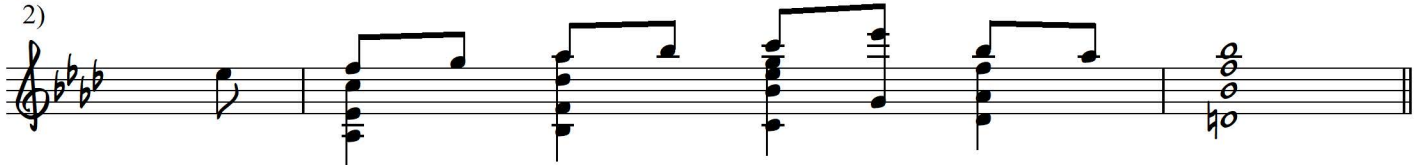
Given melody:



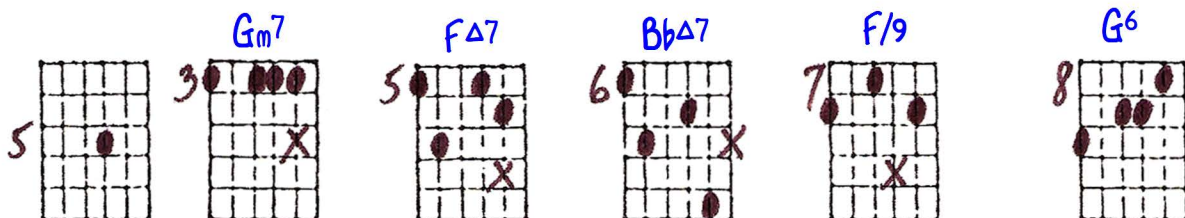
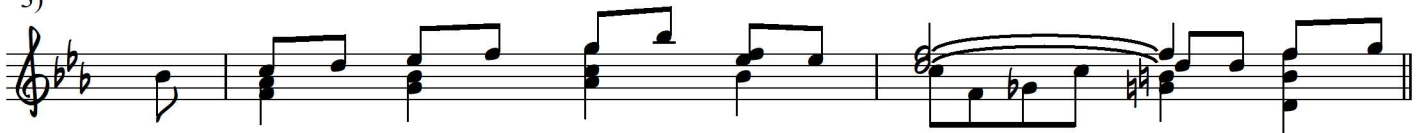
Key of E  
1)



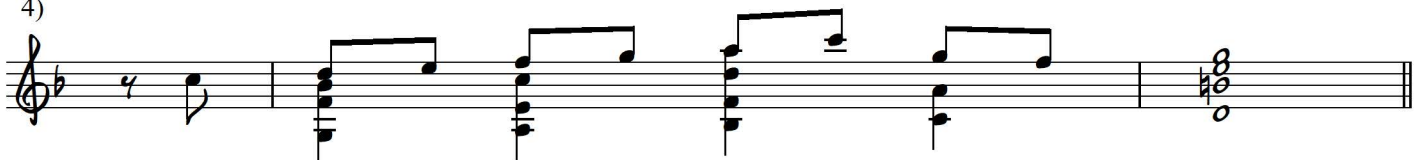
Key of Ab  
2)



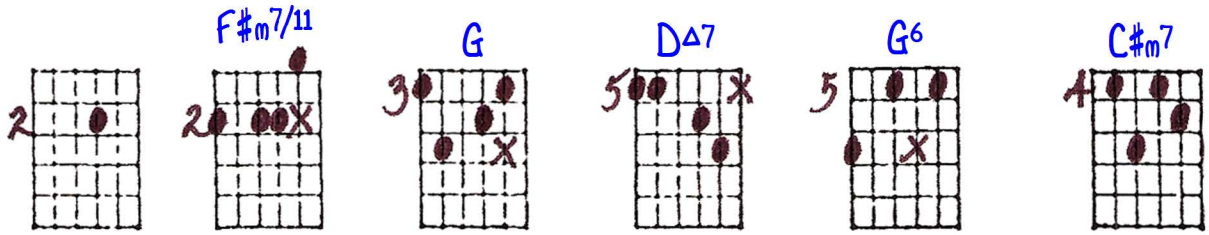
Key of Eb  
3)



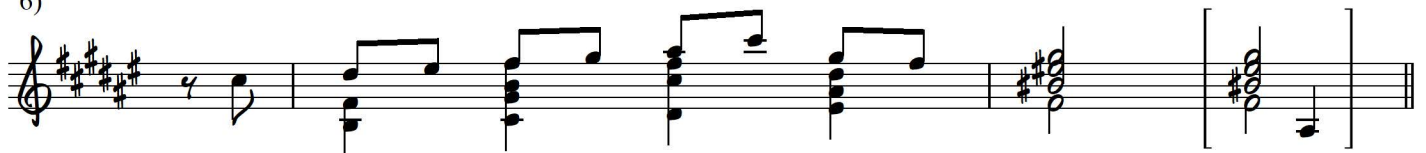
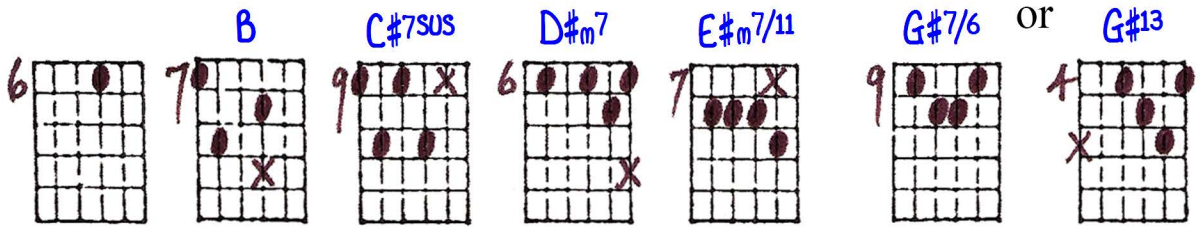
Key of F  
4)



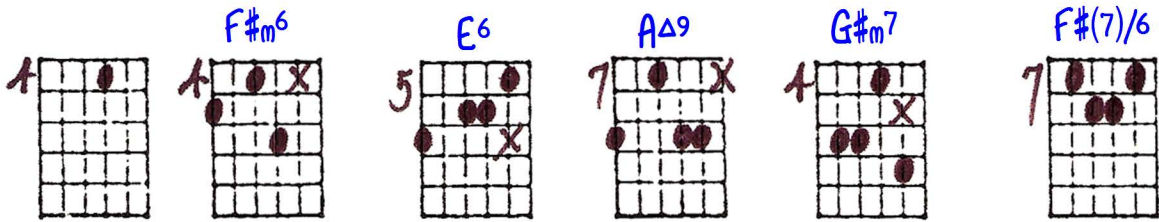
Key of D  
5)



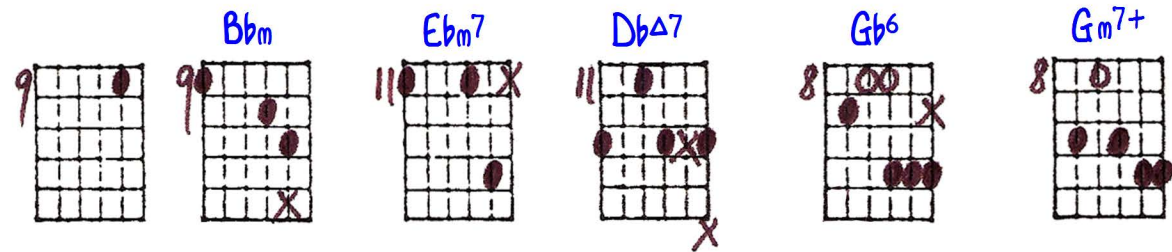
Key of F#  
6)



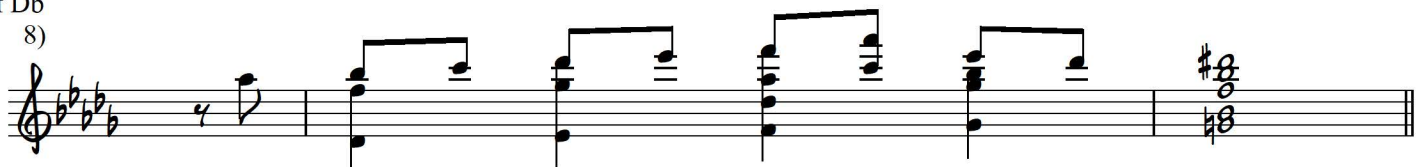
Key of E  
7)



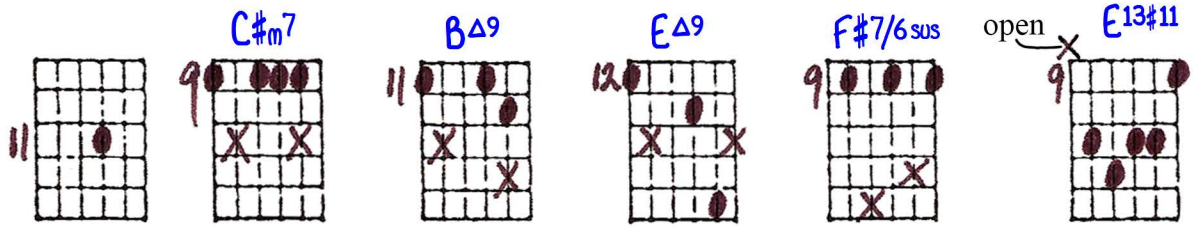
or use Cb/Gb



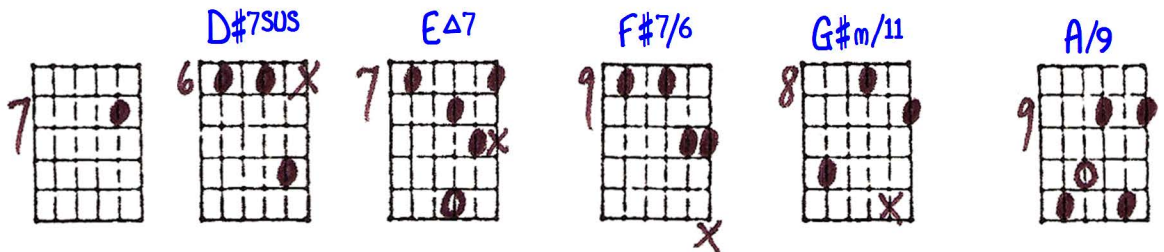
Key of Db  
8)



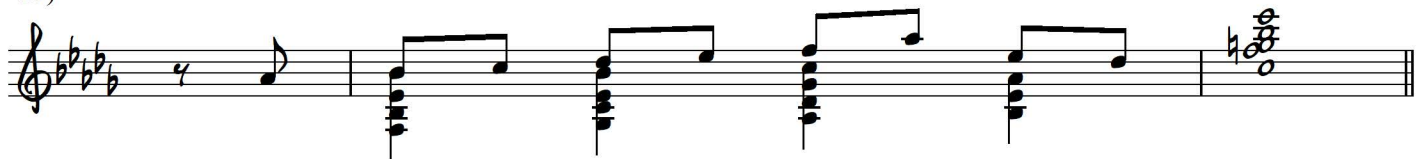
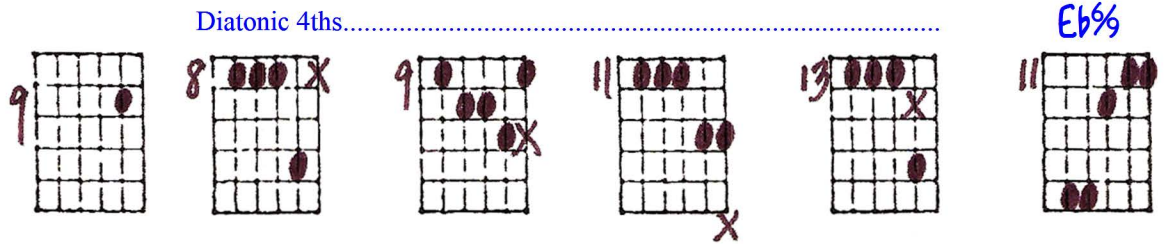
Key of B  
9)



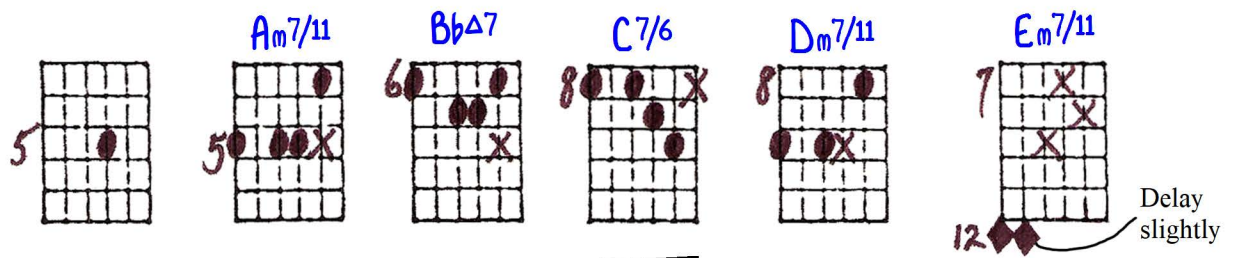
Key of B  
10)



Key of Db  
11)



Key of F  
12)





Diatonic 4ths.....

Key of C  
13)

12 10 12 13 10 10

Key of C  
14)

8 FΔ7 8 10 Dm7 12 C/9 8 G13 7 Bm7

Key of D  
15)

10 C#m7/11 9 10 DΔ7 12 Em7 9 F#m7/11 11 open E9#11



ASC. DIAT. STEPWISE BASS DERIVED HARMONIZ. of 1ST PHRASE of THERE WILL NEVER BE ANOTHER YOU

(2 to 1 HARMONIC RHYTHM)

10-28-97  
© J. Williams

The image displays a sequence of 100 guitar chord diagrams, organized into 10 rows and 10 columns. Each diagram is a 6-string guitar fretboard with dots representing fingerings and 'X' marks representing muted strings. The diagrams are numbered 1 through 100, with some numbers appearing multiple times. Vertical bar lines separate the diagrams into groups of four per row. Handwritten annotations include 'OPEN' near diagram 9, 'DELAY STRIKE 2' near diagram 12, and 'or' near diagram 4. The diagrams show various chord voicings, including triads, dyads, and full chords, often with specific fretting patterns for the bass line.