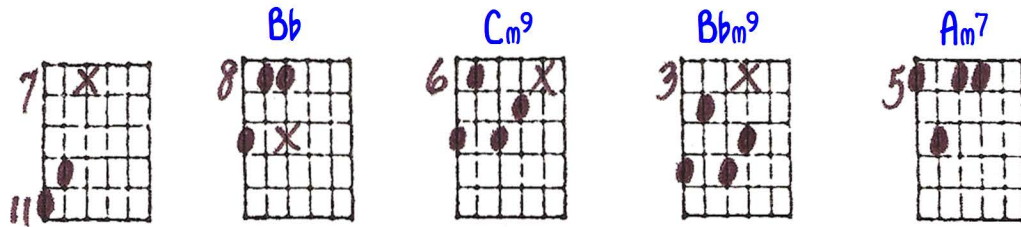


Harmonization: First Phrase of "There Will Never Be Another You"

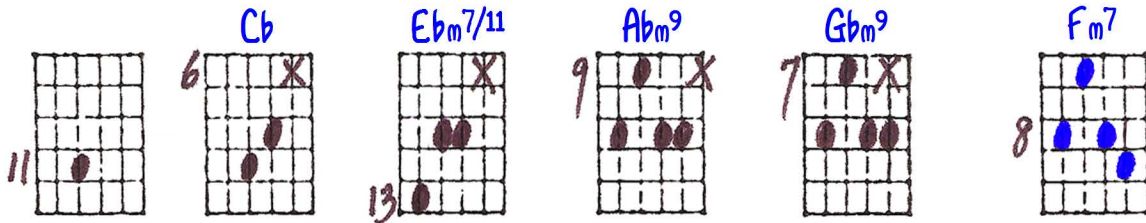
Ted Greene
1984-10-28

Part 1: Descending Diatonic Stepwise Bass Derivation (2-to-1 Harmonic Rhythm)

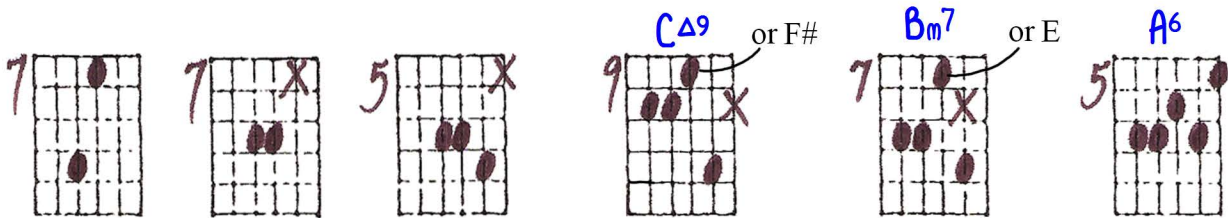
Given melody:



Key of Bb
1)



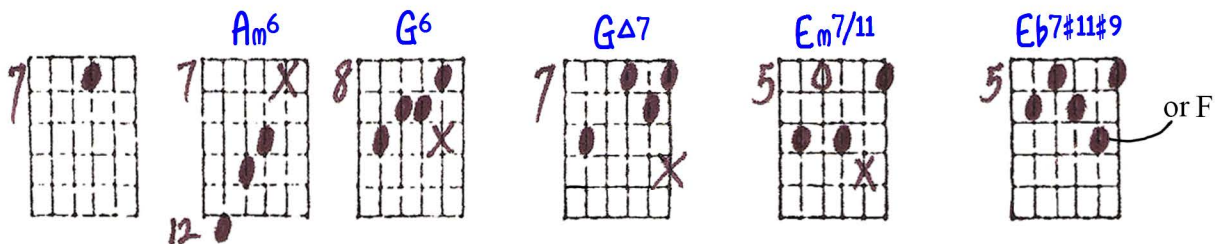
Key of Gb
2)



Key of G
3)



or F#m7/11



Key of G
4)



Key of F#

5)

6 B F#Δ9 BΔ9 F#Δ9 Fm7

Key of F

6)

10 Em7 Bb6 FΔ7 Bb6 A11

Key of G

7)

7 F#m7 Em7/11 D7/6 sus C7/6 sus B11

or F#

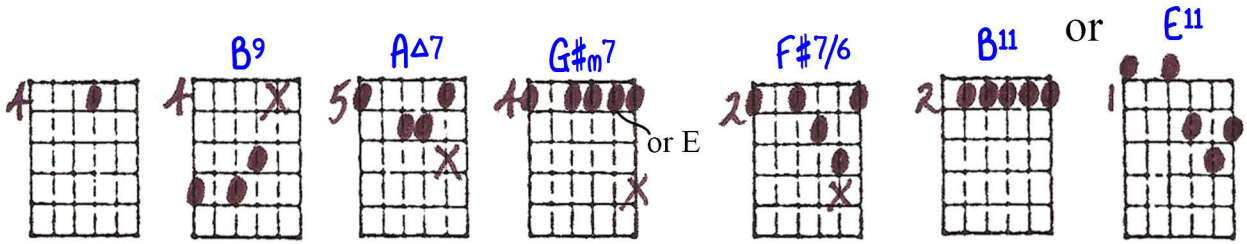
Key of E

8)

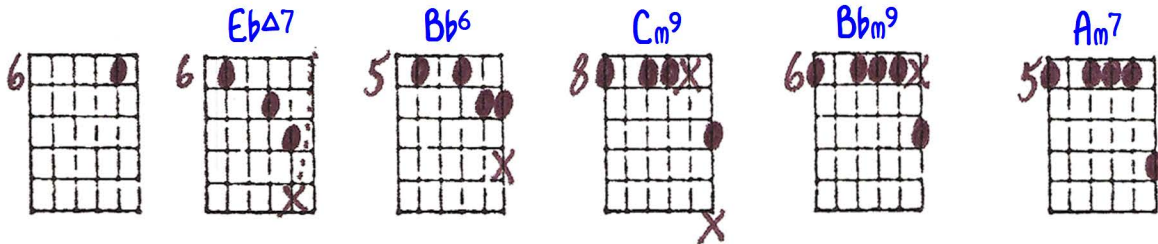
C#5 Bsus AΔ7 E/9 F#(7)/6

or A

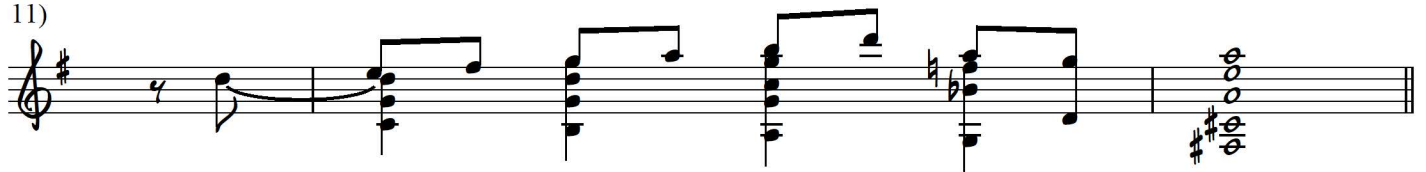
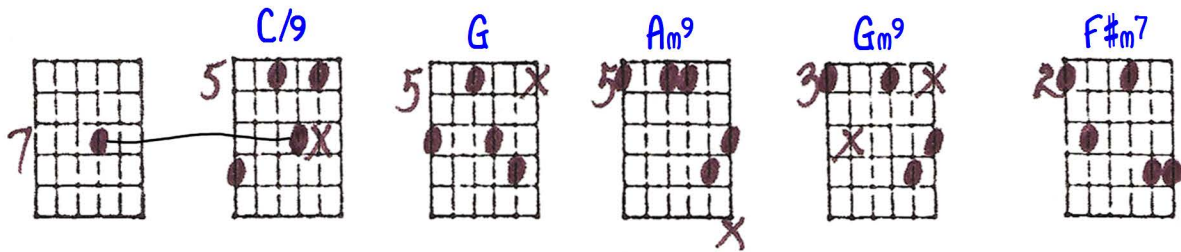
Key of E
9)



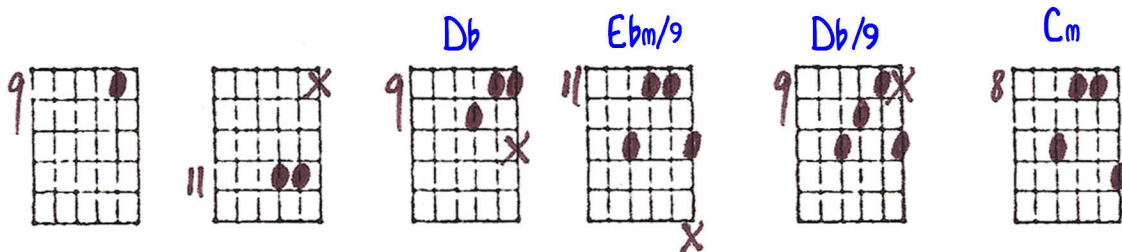
Key of Bb
10)

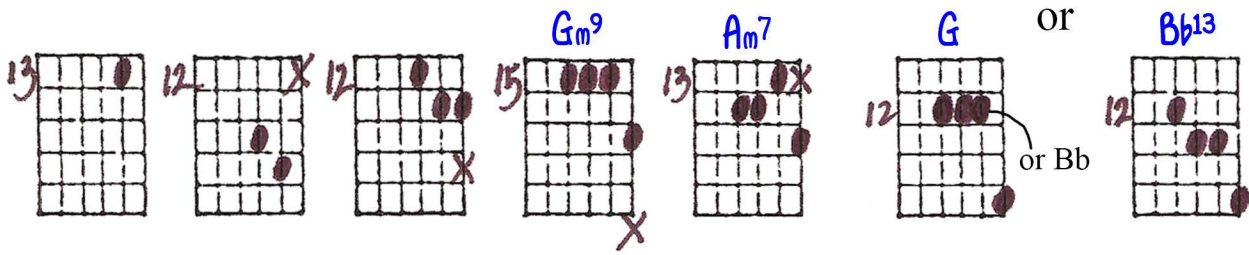


Key of G
11)

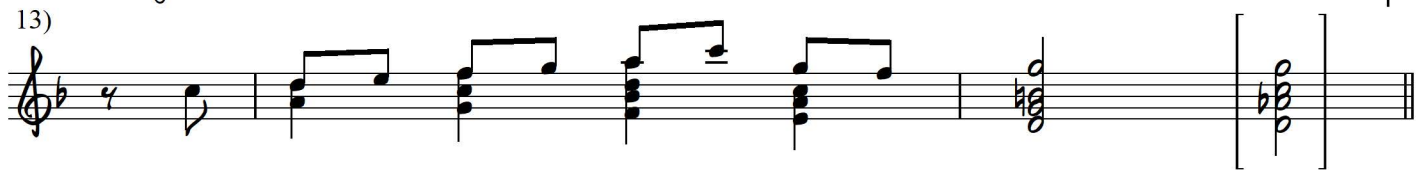


Key of Db
12)

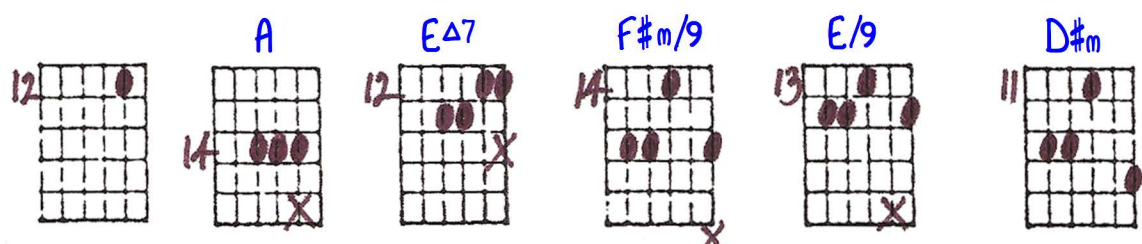




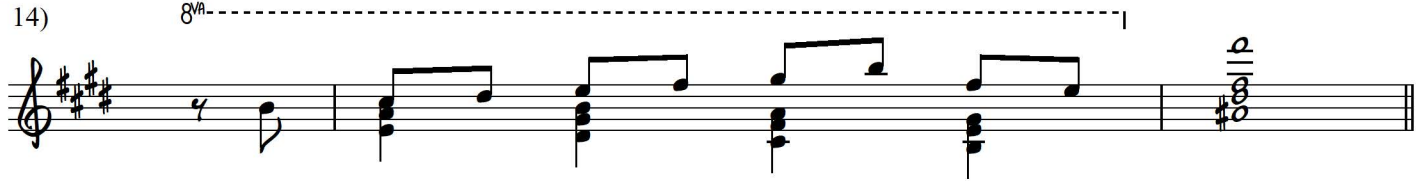
Key of F



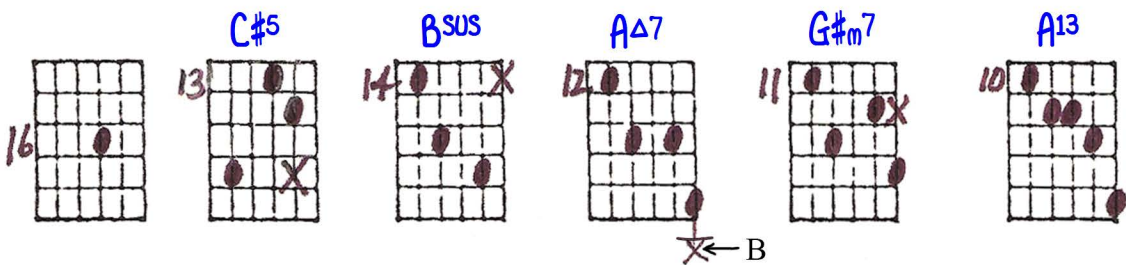
13)



Key of E



14)



Key of E



15)

HARMONIZATION: 1ST PHRASE OF THERE WILL NEVER BE ANOTHER YOU
 DESC. DIAT. STEPWISE DERIVATION (2 to 1 HARMONIC RHYTHM)

10-28-94
 © J. Williams

PLAY IN
 FINGER
 POSITION

The image displays 100 handwritten guitar chord diagrams, organized into 10 rows of 10 diagrams each. Each diagram shows a six-string guitar fretboard with dots representing fretted notes and 'X' marks for muted strings. Fingering numbers (1-4) are written above the diagrams to indicate which fingers to use. Arrows indicate finger slides between diagrams. Some diagrams include chord names such as Fm7, F#, and Bb. The diagrams are separated by vertical bar lines, suggesting measures of music. A final diagram on the far right shows a full fretboard with all strings and frets.