

Diatonic Major Harmonization: Ascending Bass Starting from Various ii's (2-to-1 melody)

Playing order: ● × □ △
○ = opt.

Assignment: As before, do each example in at least four keys and do not settle for less than complete understanding of every note on the page.



1) Key of G

Am	Bm/11	C	D ⁶	G ⁶

1a) Key of Eb

Fm	Gm	Ab	Bb ⁶	Cm ⁷

2)

(Fm)	(Gm)	Ab ⁶	Bb ⁶	Eb ⁶ Cm ⁷ or Ab ^{Δ9}

2a) Key of D

(Em)	(F#m)	G/9	A7/6	D/9

2b)

Em7 F#m7 GΔ7 A7/6 D9

3)

(Em/11) (F#m/11) G A6 Bm7 / D6

2c)

Key of Bb

Cm/11 Dm/11 Eb/9 F7/6 Bb/9

2d)

Key of Eb

(Fm) (Gm) Ab6 Bb6 Eb/9 or AbΔ9

3a)

(Fm/11) (Gm/11) Ab Bb6 Cm7/11 / Eb/9

2e)
Key of Ab

1b)

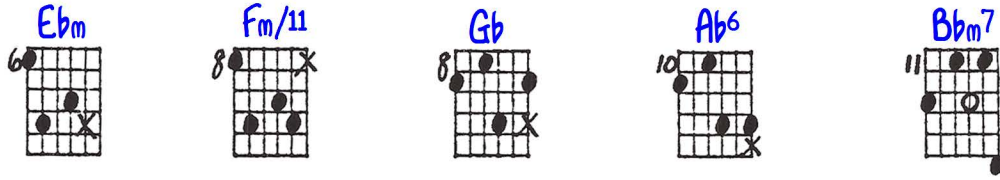
4)
Key of E

also: B7/6 C#m7 or C#m7

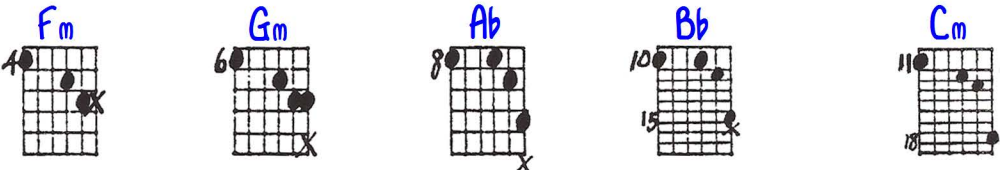
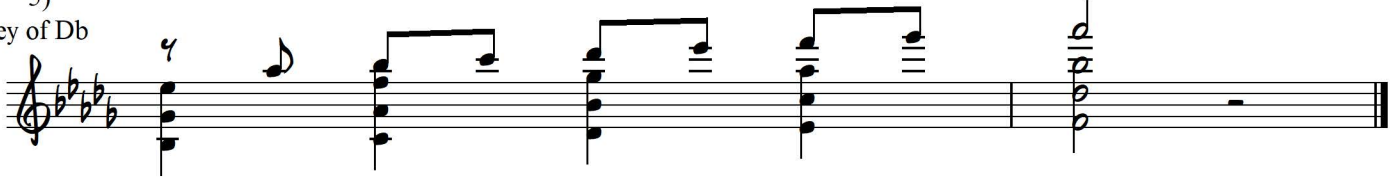
4a)
Key of C

Or bring in 4ths in top two voices.

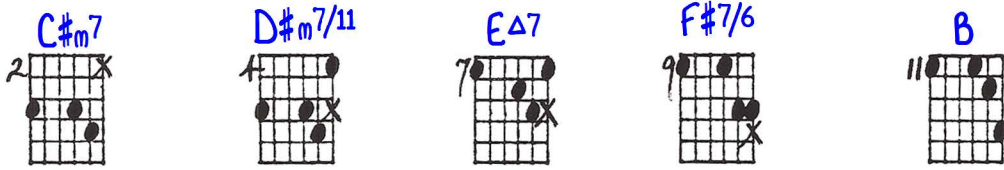
4b)
Key of A



5)
Key of Db



6)
Key of Eb

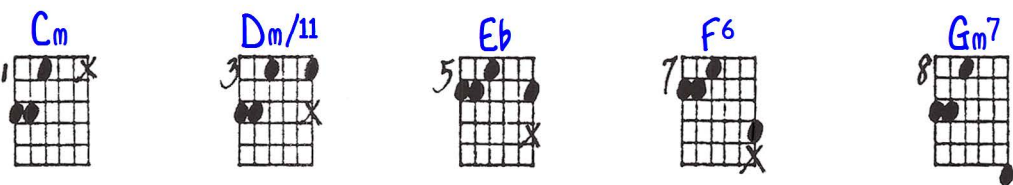
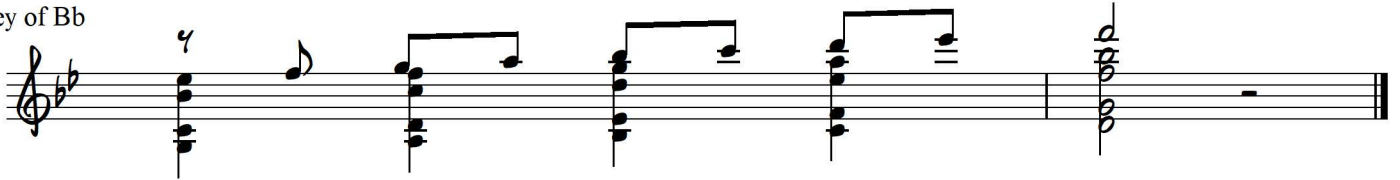


5a)
Key of B

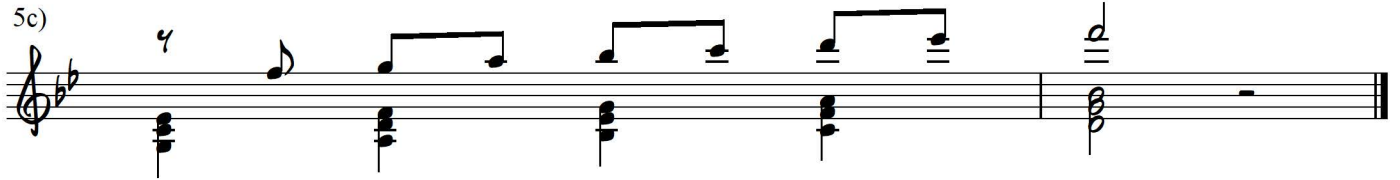


Good
right-hand
study

5b)
Key of Bb



5c)



3b)

F#SUS9 G#SUSb9 A/9 - A6 F#m7
B6 - B11 open EΔ9

Key of E

3c)

F#SUS G#SUS A/9 no3 - A6 B6 - B7SUS open E6/9

P.2

NATONIC MAJOR HARMONIZATION: ASC. BASS STARTING FROM VARIOUS II'S (2 to 1 MELON)

Assignment: As before, do each ex. in at least 4 parts and do not settle for less than COMPLETE UNDERSTANDING of every note on the page.

2-14-85

Key of G

1 3 5 8 11 12 3 5 6 8 11 3 5

Key of E

8 10 11 13 15 2 4 5 7

Key of D

9 2 2 3 6 7 6 8 10 10 10 3

Key of A

3 1 3 3 5 8 3 4 4 6 3 3

Key of F#

4 8 8 8 10 9 9 11 2 2 5 7

Key of C

7 7 9 9 8 10 10 9 10 10 7 9 10

Key of Bb

12 9 6 8 8 10 11 4 6 8 10 11

Key of B

2 4 7 9 11 1 3 6 8 10 1 3

Key of Eb

5 7 8 4 2 2 4 6 2 2 4 8

OPEN

11 11 11 11 11 11 11 11 11 11 11 11