

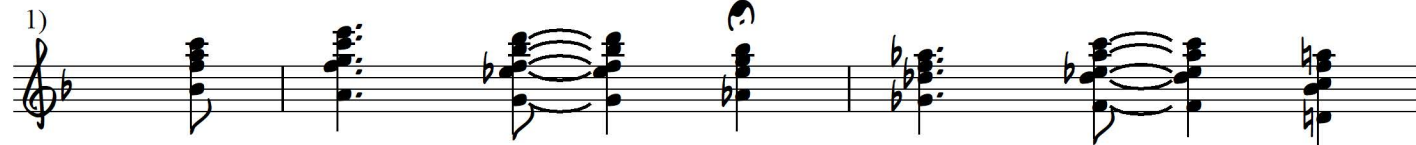
Bass-Energized Triads Language for Book on Same

Ted Greene
2000-02-05
Early Saturday

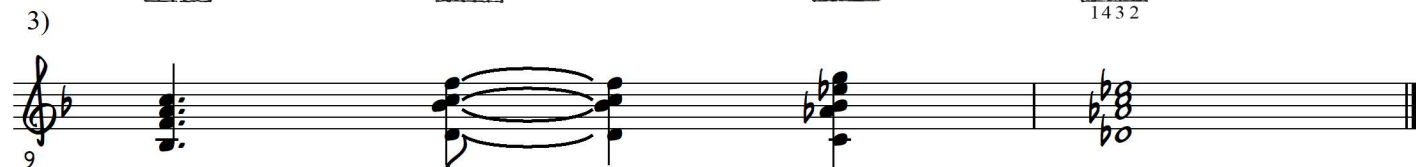
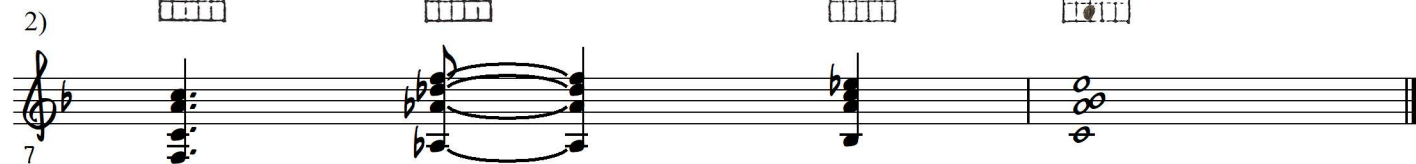
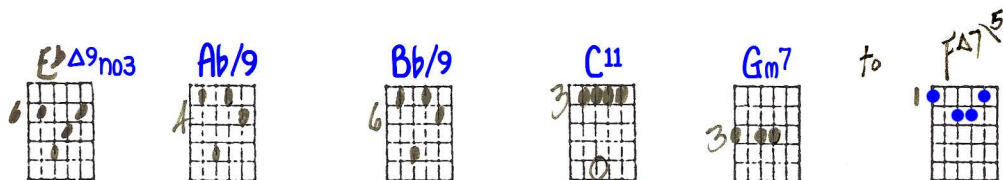
Almost
out-of-time:



Key of F



And try these chords in many other rhythms too.



Reminder: mix with hip-jazz e.g.

Part of old "KFWB" [radio station]

Almost contrary motion study too.

Key of F#

4)

Exercise 4 in the key of F# major. It features eight fretboard diagrams for the following chords: A#7#9+, D#7+, G#m9, C#7#9+, F#Δ9no3, Bm7/11, A#m7/11, and A13. The musical notation shows a sequence of these chords on a single staff, with some chords marked with 'x' to indicate muted strings.

5)

Exercise 5 in the key of F# major. It features five fretboard diagrams for the following chords: DΔ9, GΔ9, G11, (G9#11) C#7b9+, and G#13#11. The musical notation includes a "slight pause" and a "roll" indicated by a wavy line.

Key of Eb

6)

Exercise 6 in the key of Eb major. It features eight fretboard diagrams for the following chords: AbΔ9, BbΔ9, CbΔ9, EDbΔ9, Cb, Ab11, BbΔ9no3, and Eb/9. The musical notation shows a sequence of these chords with a slur over the first four.

Wondrously bright I chord placement of this already bright voicing:

Key of C

7)

Exercise 7 in the key of C major. It features ten fretboard diagrams for the following chords: CΔ9no3, AbΔ9, BbΔ9, EbΔ9no3, CΔ9, FΔ9no3, Eb, AbΔ9no3, CΔ13, and CΔ9 (all open). The musical notation shows a sequence of these chords, with the final CΔ9 chord marked as "all open".

7a)

20

Great B.E.T. Moves for Me and the Students

Ted Greene
1992-02-01
Saturday

Contemporary Chord Progression

Ted Greene
1994-09-11

Parallel Major Chord Study

Ted Greene

Great B. E. T. Moves for me + the students

SAT. 2-1-92

11

CONTEMP.
CH. PROG.

9-11-94

Key of A

Parallel Major Chord Scale