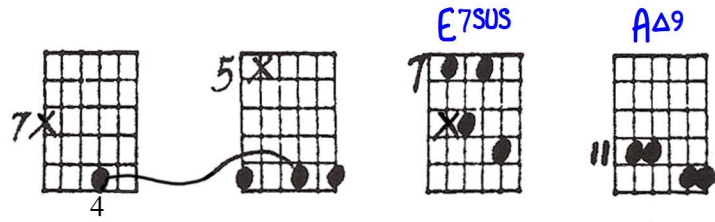


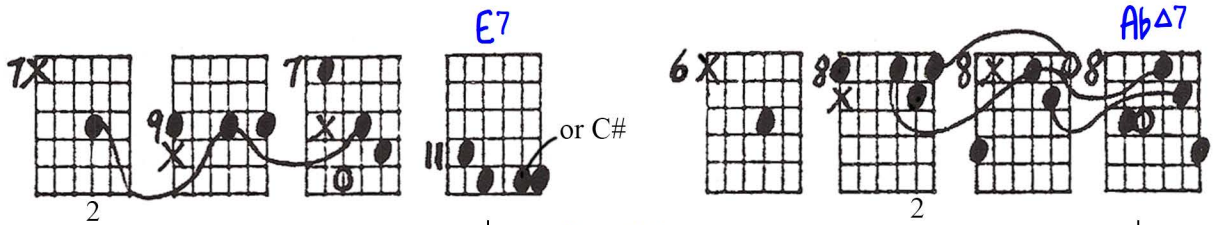
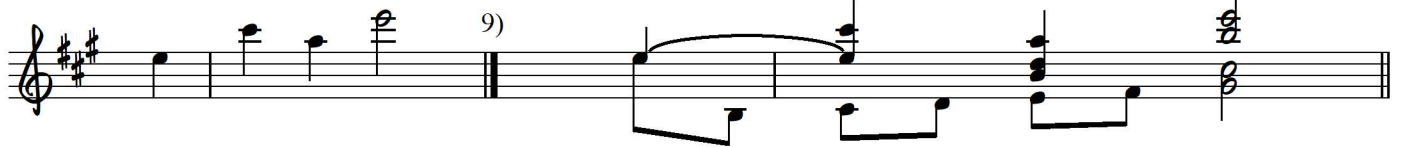
2-to-1 Diatonic Stepwise Ascending Bass Motion with Delayed Entrance As the Generator of the Harmony (Part 2)

Playing order: ● X □ △
○ = opt.

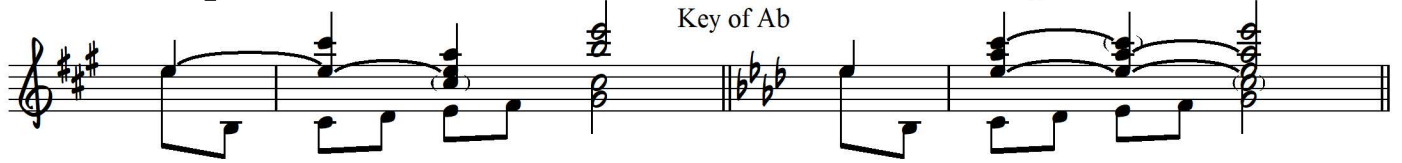
[Given melody:]



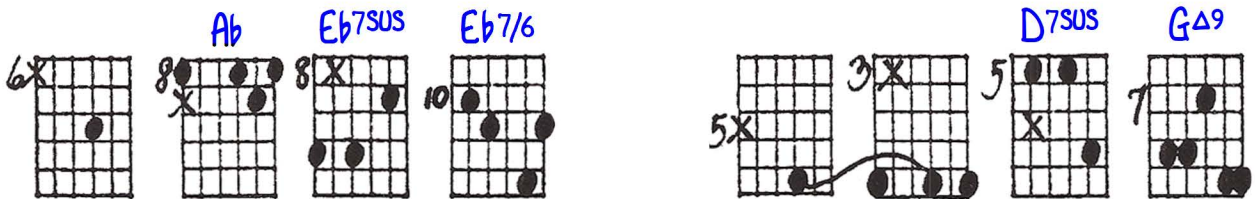
Key of A



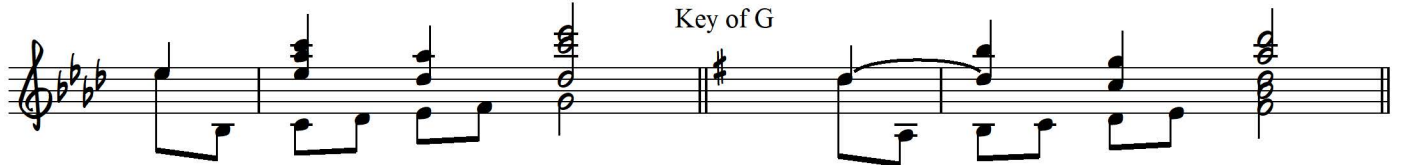
Key of Ab



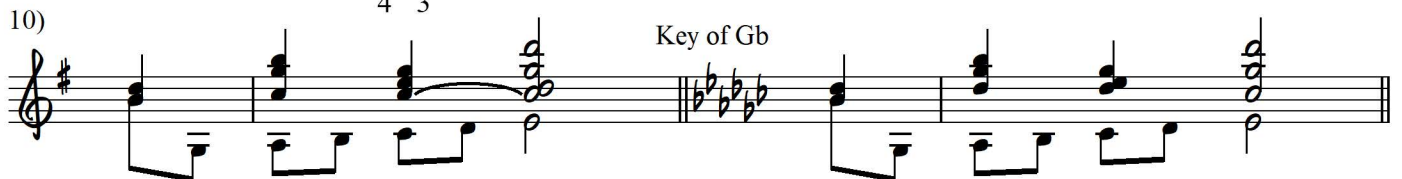
(Compare with the 1st example)



Key of G



Key of Gb



10)

6x Bb Eb Gm7 A Bm9 D/9 D/9

Key of Bb

Key of A

3 A11 Bm7 G D Bm CΔ7 G D7sus

Key of G
9a)

If F# is used then C is optional.

5x Dm EbΔ7 Bb F AΔ7 D E9

Key of Bb

Key of A

3x AΔ7 Fm/9 E11 AΔ7 Ab E7/6

Key of Ab

Key of G

Key of B (12)

Key of G

Also on next set

Key of B (12)

Key of Bb

Key of C

Key of Bb

Key of D

Key of Db

Key of D

4X 7 11 6 9 C#7sus 11 E6 or B 3X 6 5 10 8 careful 10 Eb6/n03

Key of B

Key of Bb

3X 5 10 8 11 Eb6/n03

DATE: _____ STEPWISE ASC. 2 to 1 BASS MOTION as the GENERATOR of the HARMONY w/ DELAYED ENTRANCE

© 5-3-85
Jed Johnson



Key of A

7X 5X 7 11

Key of Ab

6X 8 8X 8

Key of G (compare with the 1st ex.)

6X 8X 8X 10

Key of A

3X 5 8 7

Key of Gb

2X 10 7 6

Key of Bb

6X 6 10 3 2 2

Key of A

5X 7 5 7

Key of G

3 7 7 7

Key of Ab

2X 3 2 5

Key of Bb

5X 6 5 8

Key of A

4X 5 9 12

Key of Ab

3X 1 8 11

Key of A

3X 1 8 11

Key of G

2X 3 7 7

Key of Bb

6X 9 11

Key of Bb

1X 6 9 12

Key of D

4X 6 9 11

Key of Bb

3X 5 8 10

Key of C

5X 7 10 13

Key of D

7X 9 12 15

Key of Bb

6X 8 11 14

Key of B

4X 6 9 11

Key of Bb

3X 5 8 10

Key of Bb

3X 5 8 10

Key of B

6X 10 11

