

Diatonic Major Key: **1st Inversion Triads (35R) and Pedals**
in Short Song-like Passages

Ted Greene
 1985-08-31

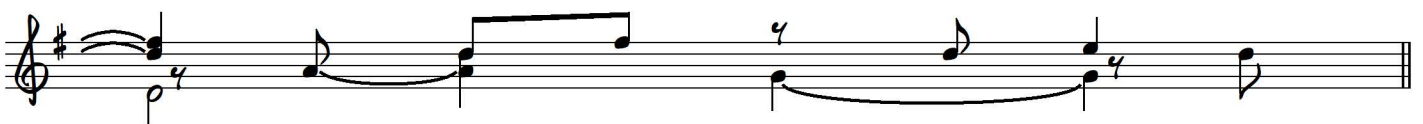
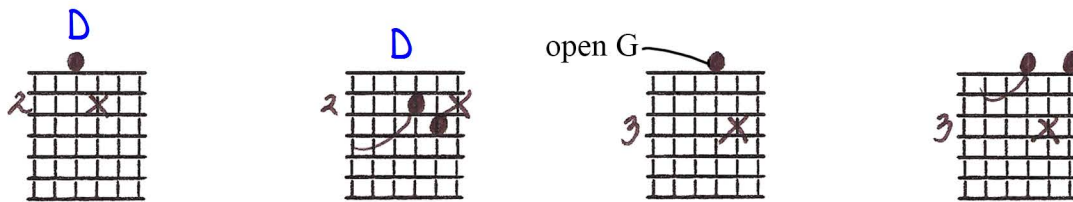
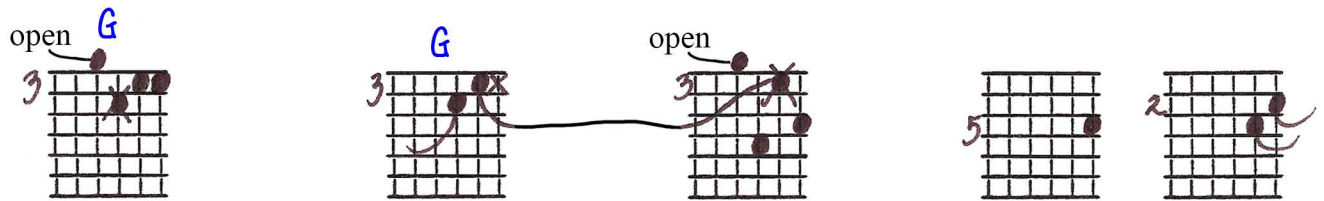
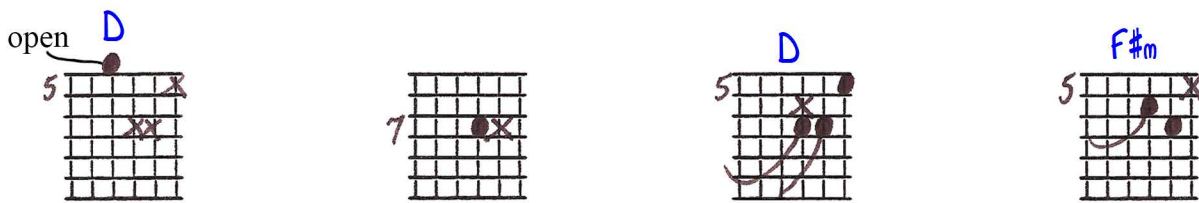
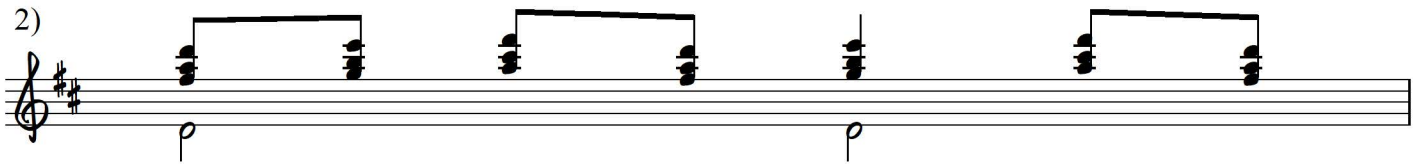
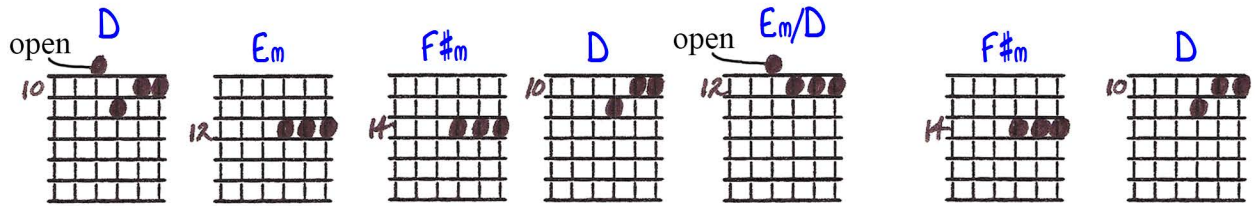
Playing order: ● × □ △
 ○ = opt.

(Mostly Top 3 Strings)

Not *too* slowly:
 Key of D

1)

Learn these phrases *cumulatively*, or the process will be too painful.



open D, Em, F#m, D, open Em/D, F#m, open D

10 12 14 10 12 14 10

F#m7, A, Bm7 D/B, Bm7 D/B

7 7 7 2 3

open Em7, optional pull-off, G, G/A, G/A

5 1 4 3 2

D, G/C, G, G, D

2 3 3 3 2

DIATONIC MAJOR KEY: 1ST INVERSION TRIADS (35R) and PEDALS in SHORT SONG-LIKE PASSAGES

(mostly top 3 strings)

© 8-31-85 Ted Greene

NOT TOO SLOWLY

Key of G
①

①

10 12 8 10 10 7 5 2

one and and two and three and four one and two

LEARN THESE PHRASES CUMULATIVELY OR THE PROCESS WILL BE TOO PAINFUL

7 2 2 2 3 2 2 2

and three four one and two and three and four and

2 2 2 2

one and two and three and four

②

10 12 14 10 12 14 10 5

one and and two and three and four and one and

7 5 5 3 3 3 5 2

three and three and four and one and two and three and four and

2 2 3 3 10 12 14 10

one and two and three and four and one and two and

12 14 10 7 7 7 7 5

three and four and one and two and three and four and one and

3 3 3 2 2 3 3 3

two and three and four and one and two and three and four and

3 2 2 2 2 2 2 2

and three three

NOT PULL OFF