

WALKING BASS JUMPBACK BLUES

With '50's Ray Charlesish Theme

Optional: Slide into the 2nd chord too of many of these phrases

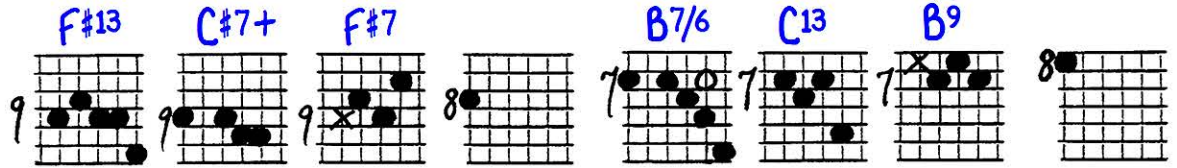
Playing order: ● × □ △
○ = opt.

Slide into
this chord
(from below)

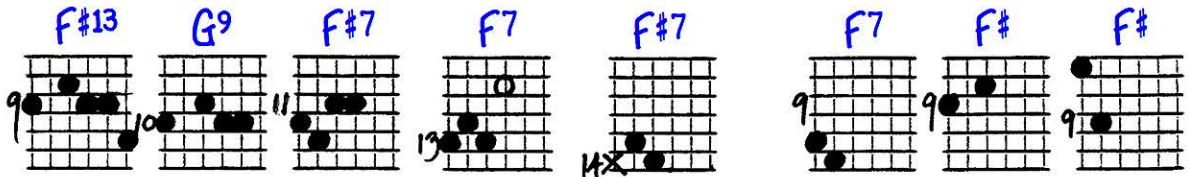
Slide

Key of F#

M.M. = 96



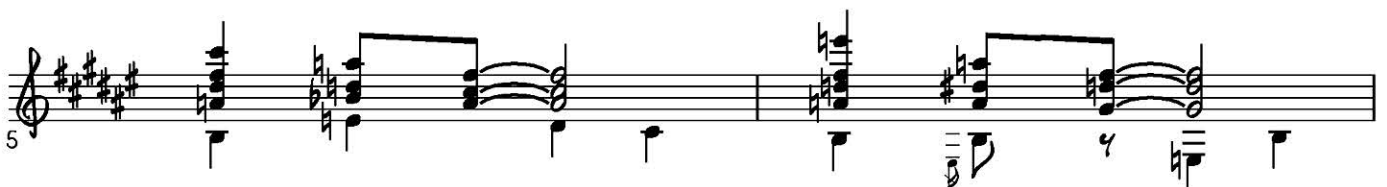
Slide




Slide

open
ghost

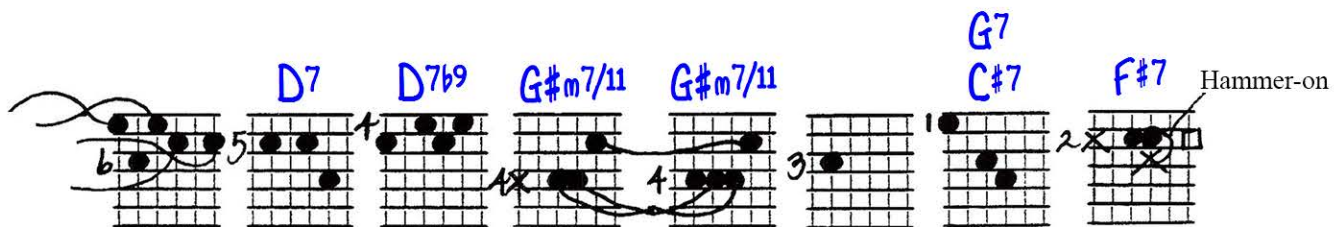
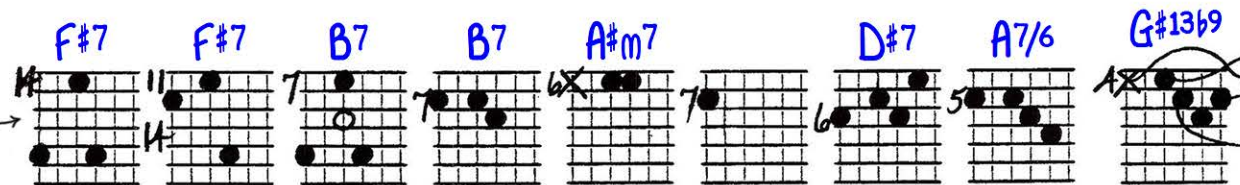
opt.:
slide into



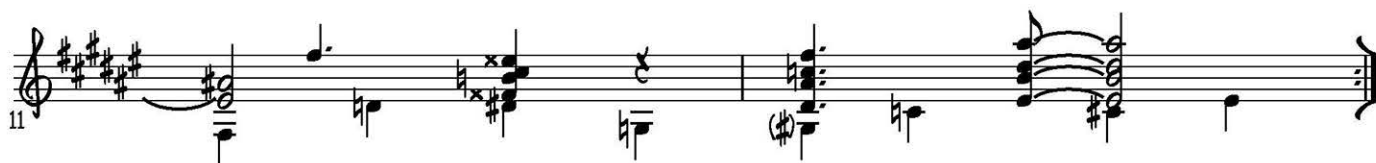
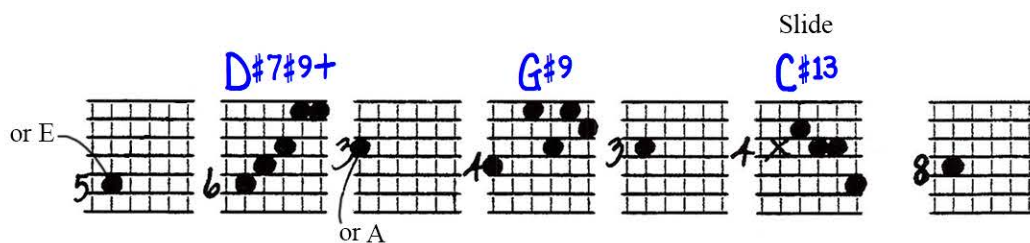
optional:



Optional: slide into



Slide



M.M. = 96
Key of F#

WALKING BASS JUMPBACK BLUES w/ 50's RAY CHARLESISH THEME

© 10-7-89
Jed Johnson

SLIDE INTO THIS CHORD 9 (from below)

anticipation
this one is optional

OPTIONAL: SLIDE INTO THE 2ND CHORD

anticip.

too many of these phrases

ANTICIP.

opt: SLIDE INTO

ANTICIP.

ANTICIP.

ANTICIP.

OPTIONAL: for 1ST CHORD in line above