

GOSPEL-BLUE PHRASES

Nice option: tune down 1/2 step

1) Key of B

2) Key of D

Repositioned:

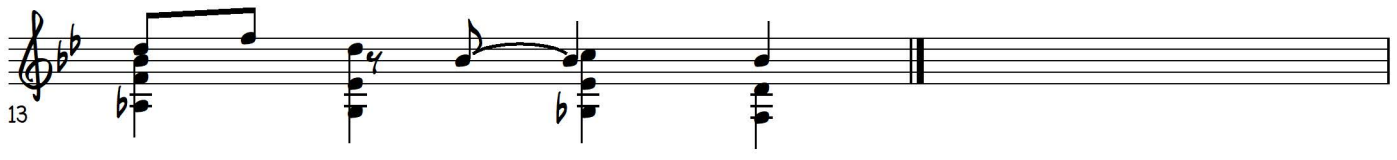
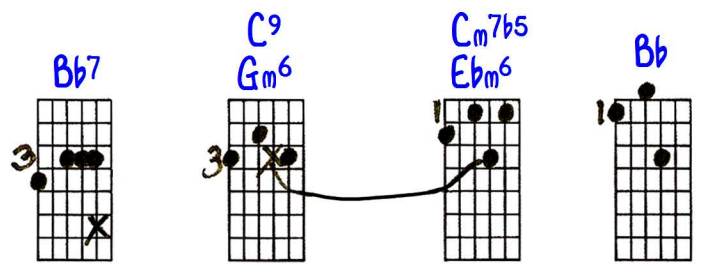
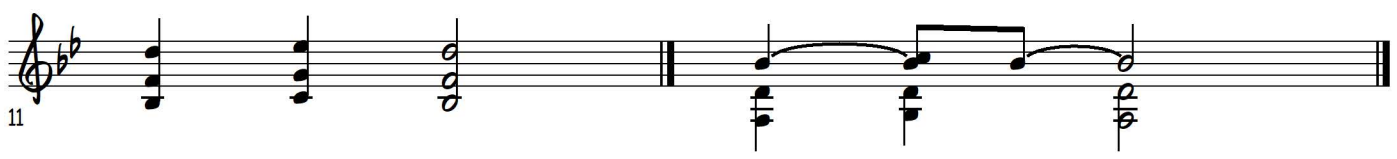
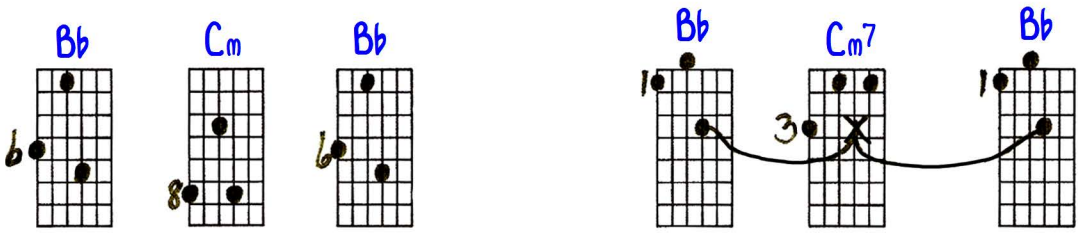
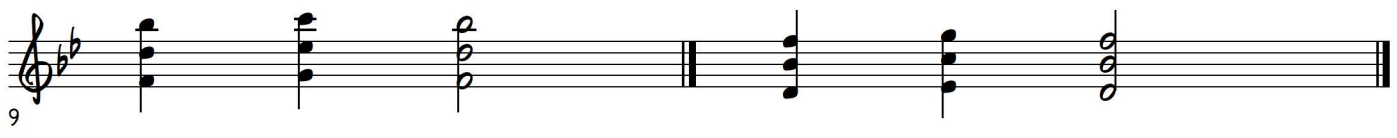
And back:

2a)

Repeat, and use as last chord instead of major:

3) Key of Db

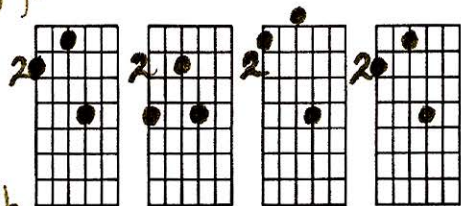
4) Key of Bb



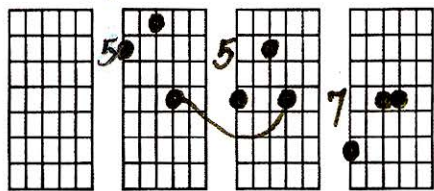
GOSPEL-BLUE Phrases

1-17-97

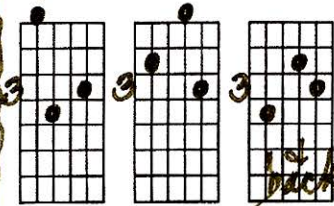
Key of B



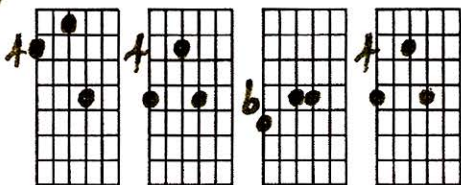
Key of D



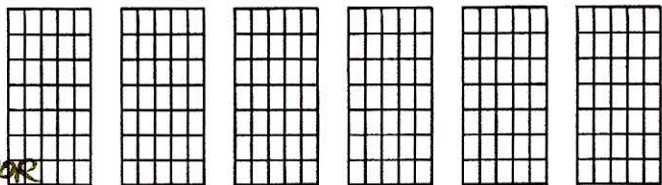
TRICK OPTION: Tune down 1/2 step
Repositioned:



Key of D♭



Repeat 4
as last
chord
instead of MAJOR



Key of F♯

