

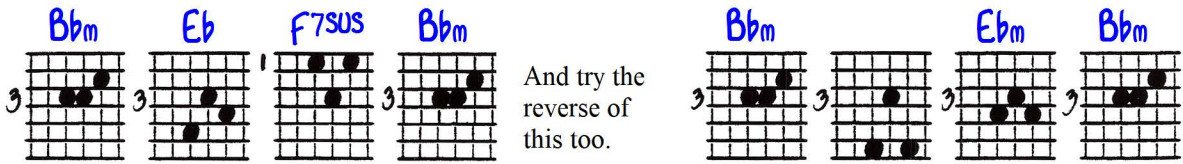
# Dorian and Aeolian 6ths with Inner Pedals

(Baroquish Flavor as Result)

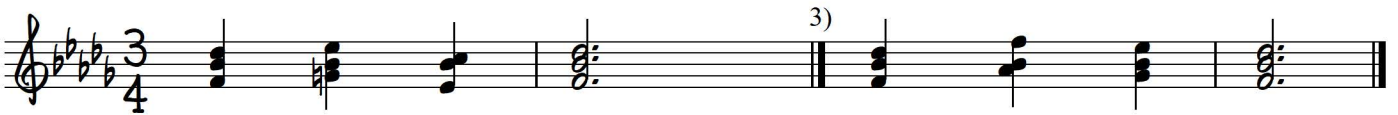
Key of Bbm  
1)



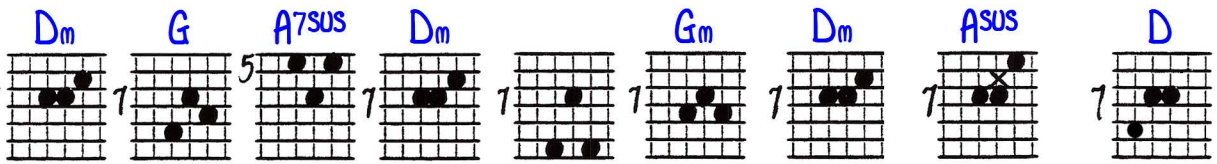
2)



And try the reverse of this too.



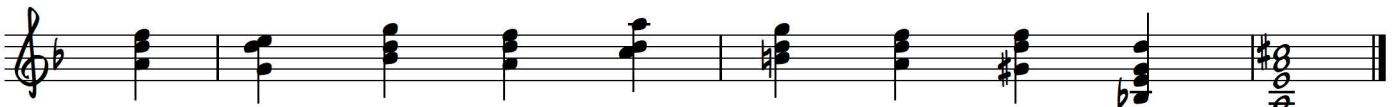
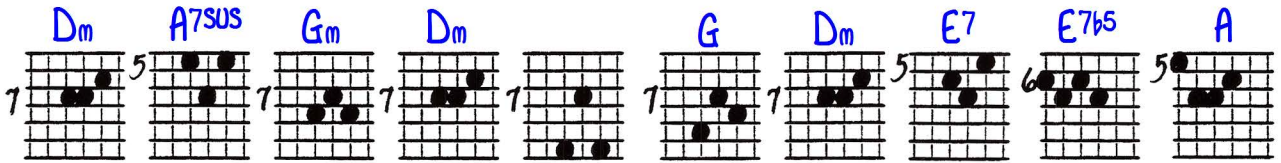
Key of Dm  
4)



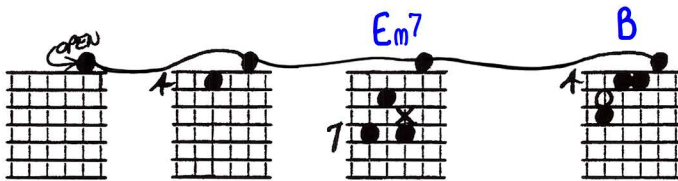
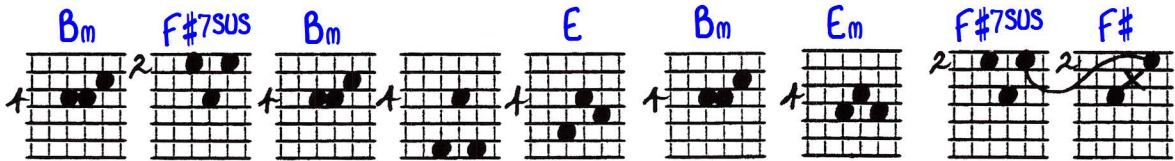
or on next string set



5)



Key of Bm  
6)



P. 1 minor  
Key of Bbm

# DORIAN and AEOLIAN 6ths w/ INNER PEDALS

## BAROQUE FLAVOR as result

© 6-12-87  
John Williams

①

②  
3/4 TIME  
or  
4/4 w/ a PICKUP

②

and try the reverse of this too

④  
Key of Dm  
4/4 TIME

④

open next set

⑤

⑤

PICKUP  
(BEAT 1)

⑥ Key of Dm

⑥

PICKUP

OPEN