

Baroque Counterpoint - 2 Voices Yielding 3 (or 4) via Ties

Ted Greene, 1989-07-23

Playing order: ● × □

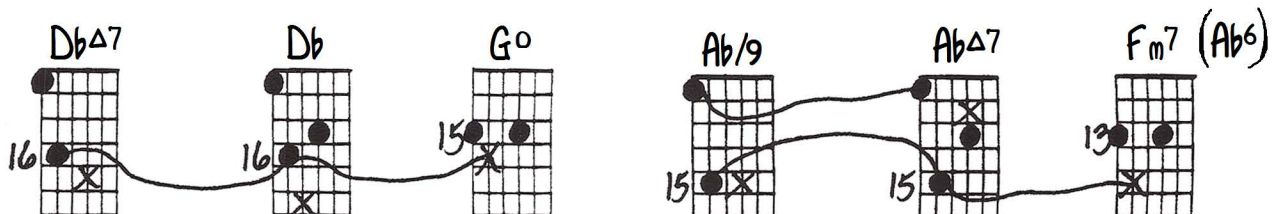
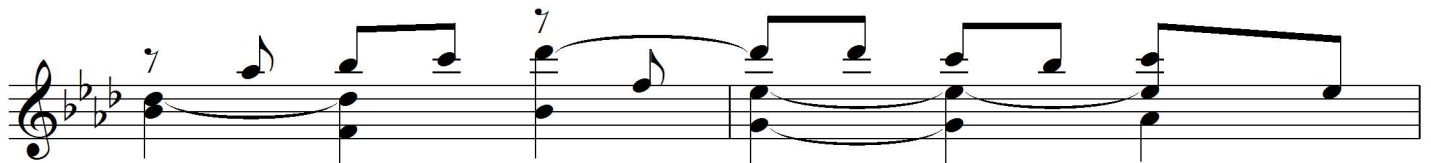
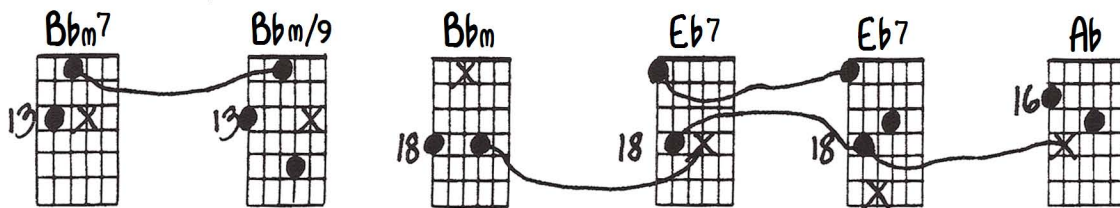
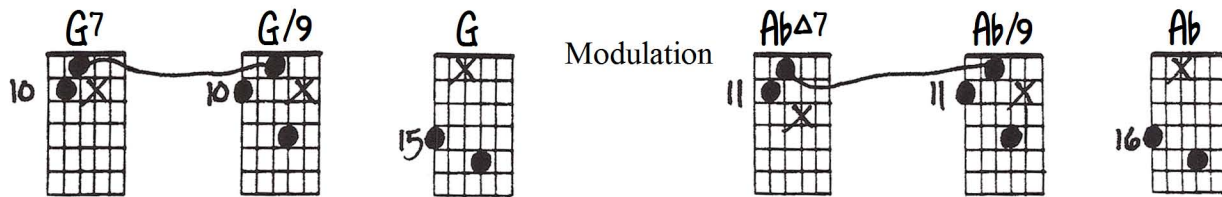
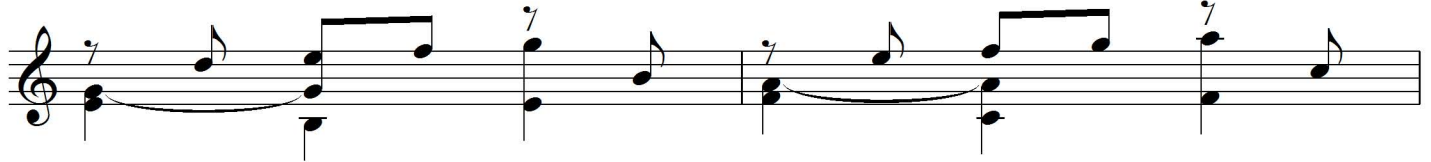
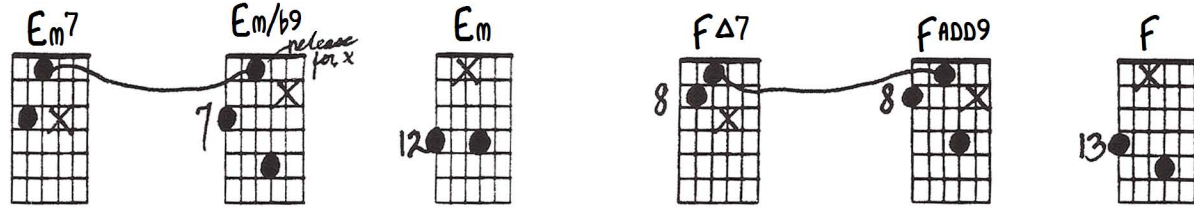
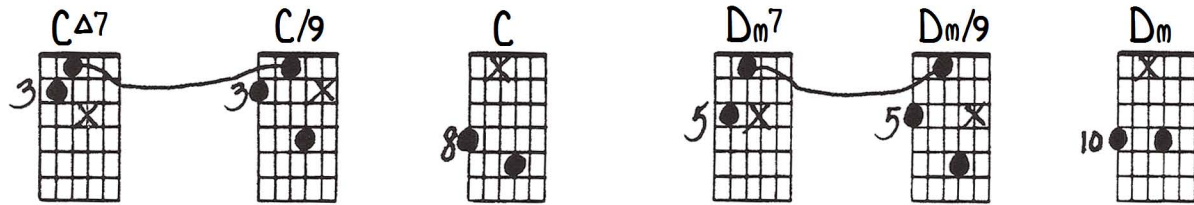
1)

The score is organized into seven systems, each with guitar chord diagrams and two-voice musical notation:

- System 1:** Chords I C, CΔ7, CΔ7, vii° B^o, B^o7 no 5, B^o7 no 5. Includes a handwritten note: "OPTIONAL THE HERE" with an arrow pointing to the first C chord.
- System 2:** Chords vi Am, Am7, Am7, V G, G7, G7.
- System 3:** Chords F, FΔ7, FΔ7, Em, Em7, Em7.
- System 4:** Chords Dm, Dm7, Dm7, C, CΔ7, CΔ7.
- System 5:** Chords B^o, B^o7 no 5, B^o7 no 5 - E. Includes a handwritten note: "SUSTAIN for II's" with an arrow pointing to the B^o7 no 5 - E chord.

The musical notation shows two voices (treble and bass clefs) with notes and rests, often featuring ties between notes in adjacent measures. The final system concludes with a key signature change to E major, indicated by a sharp sign on the F line.

2)



Chord diagrams and musical notation for the first system. The chords are Bbm, Eb, Ab7, Ab6, and Db. The musical notation shows a melodic line with ties and a bass line with chords.

Chord diagrams and musical notation for the second system. The chords are GbΔ7, Gb6, Cm7b5, Fm7, F(m)#5, and Bbm7. The musical notation shows a melodic line with ties and a bass line with chords.

Chord diagrams and musical notation for the third system. The chords are Ebm7, Ab/9, Ab7, and Db. The musical notation shows a melodic line with ties and a bass line with chords.

Now do this whole example one fret up, then again one fret above that.

