

Playing order: ● × □ △
○ = opt.

20th Century Diatonic - Contrary Patterns

Ted Greene
1979-02-18

Minor 7 or Minor 7-Dominant 7

12 12 8 12 Am7/11 D6 Am/9 D11

1)

12 12 8 7 Em7 D6 CΔ7 D13sus G Am7

2)

10 10 7 5 C/9 Bm7

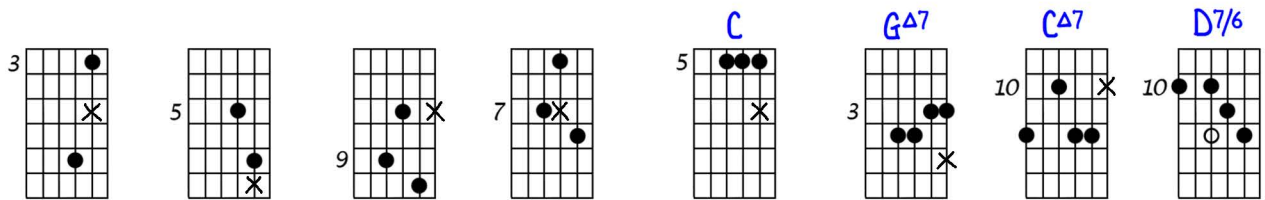
3)

CΔ7 GΔ9 CΔ9 G C GΔ7 Am9

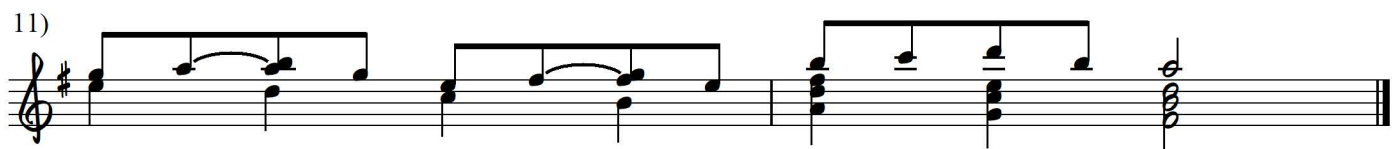
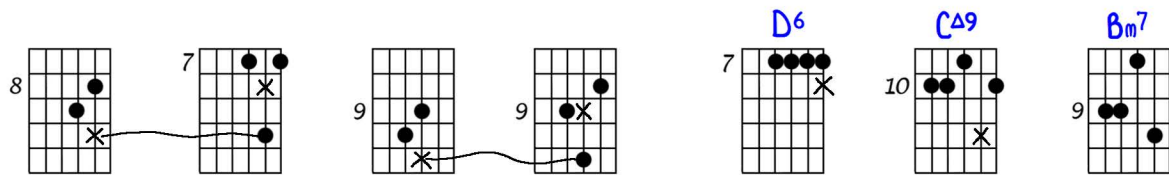
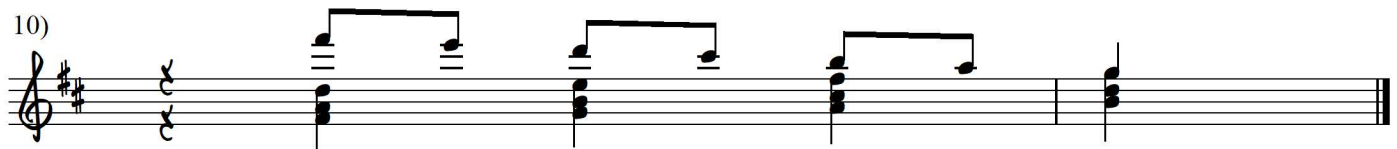
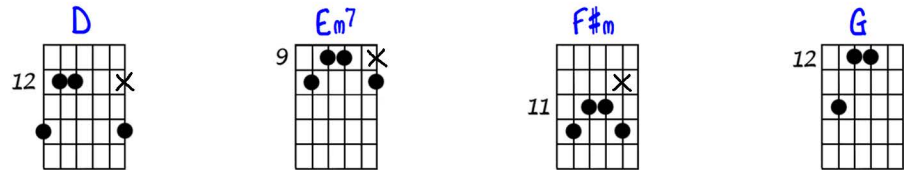
4)

D7 CΔ7 G Am7

4)

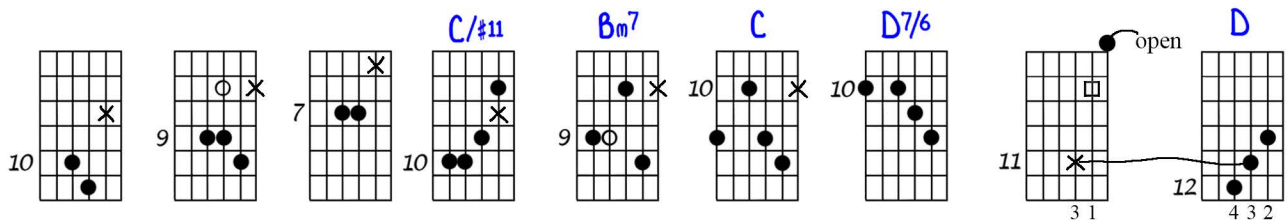


1st Inversion
Contrary



Example of adding lower bass to #7) above.

Country



20th CENT DIAT Contrary Patterns
m7 or m7-dom7

2-18-79

Handwritten musical notation on five staves. The notation includes various rhythmic values (eighths, sixteens, dotted notes), rests, and accidentals (sharps, flats, naturals). Some notes are beamed together in groups. There are also some handwritten annotations like 'OR' and 'ETC' interspersed within the notation.

1st line
contr

Handwritten musical notation for a first line example, showing a specific rhythmic pattern with notes and rests.

Example of
adding lower bass to above

Handwritten musical notation on a single staff, illustrating the concept of adding lower bass notes to an existing pattern. The notation shows a sequence of notes with stems pointing up, and then a lower note is added below the sequence.

COUNTRY
m on t